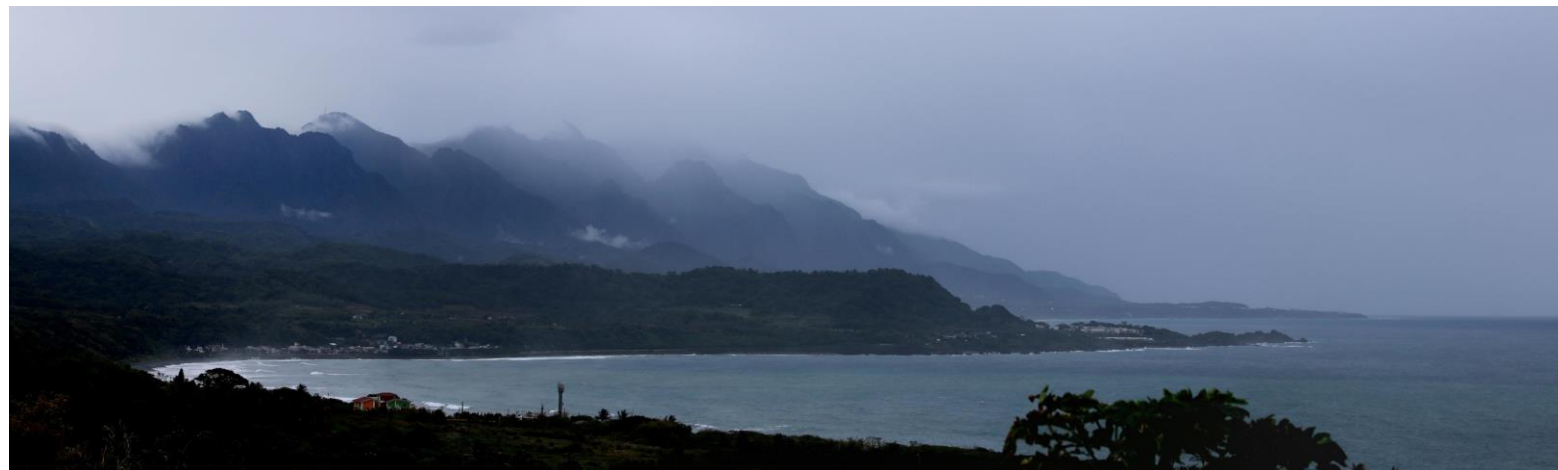
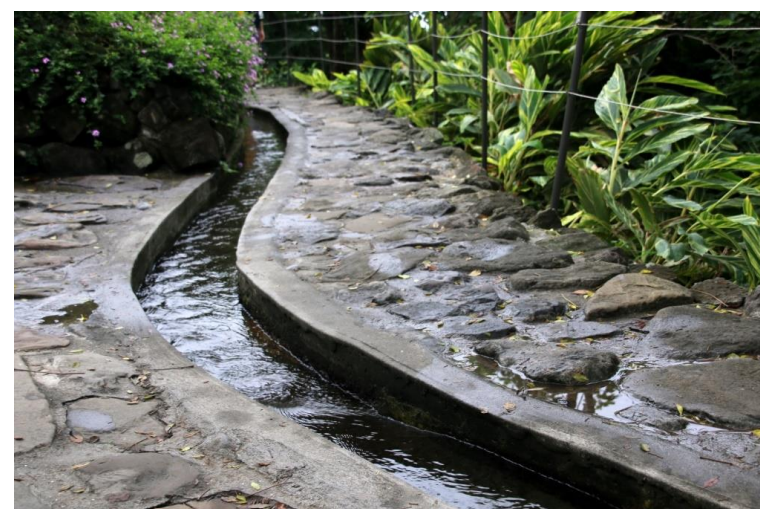


12/11/2017



המים הזורמים מעלה







מרכז מבקרים – מוזיאון ילדים פתוח

## קסאיאוליו







סוף כביש 26

כביש 199



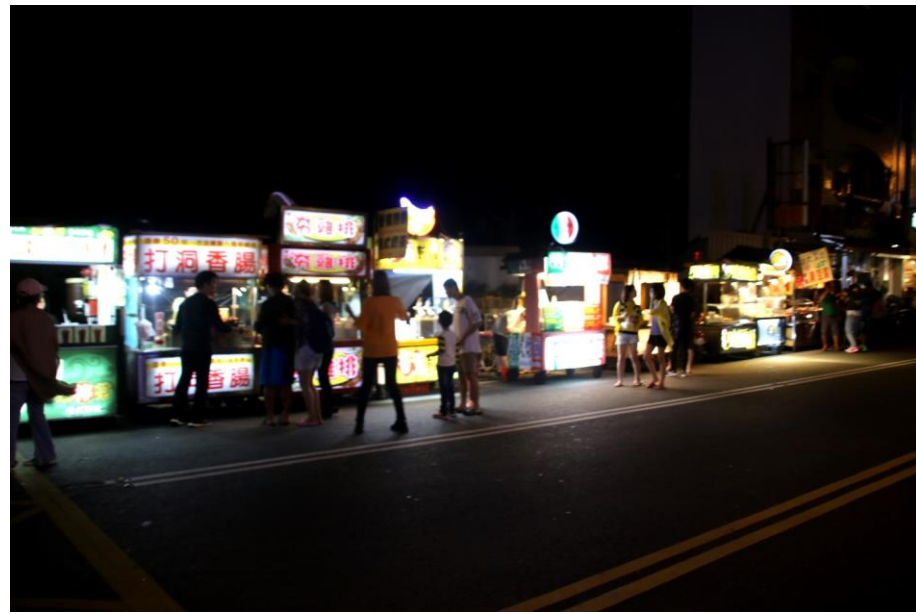
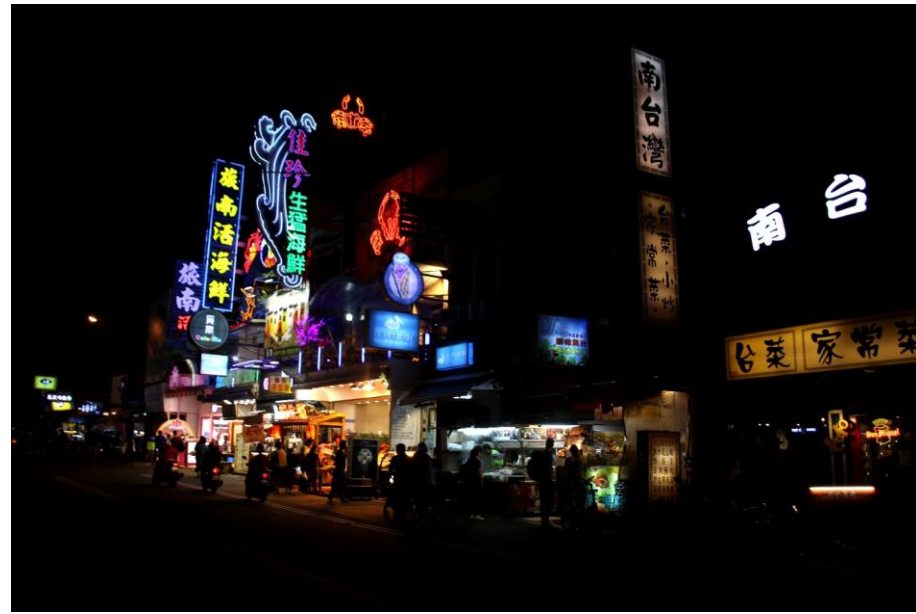




קנטינג







A promotional flyer for "Kenting Dream B&amp;B". It features a stylized map of Kenting with a red star marking the location. The map includes directions to "往大崗", "往高陞", "往聖丁國家公園", and "往蘭臺". Landmarks like "聖光會館", "天敬中心", and "7-11" are also marked. The flyer includes a QR code, the text "WE ARE HERE.", and contact information: "訂房專線: 08-8863980 0979-226979", "屏東縣恆春鎮墾丁里墾丁路文化巷52號", and "mail: kentinggarden52@yahoo.com.tw".







סלע ניכסון או סלע המפרש





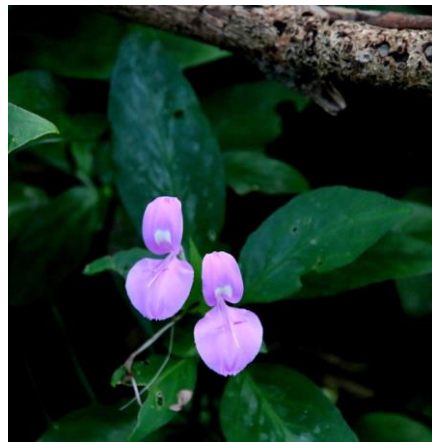
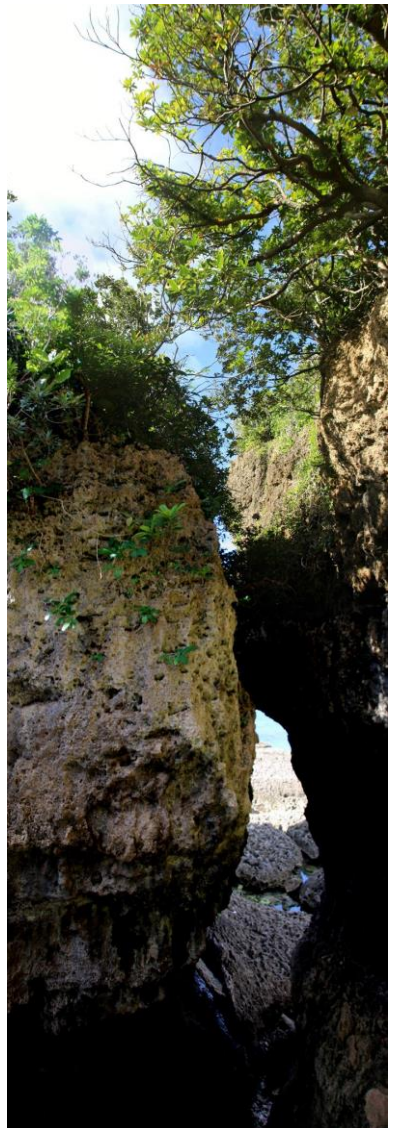
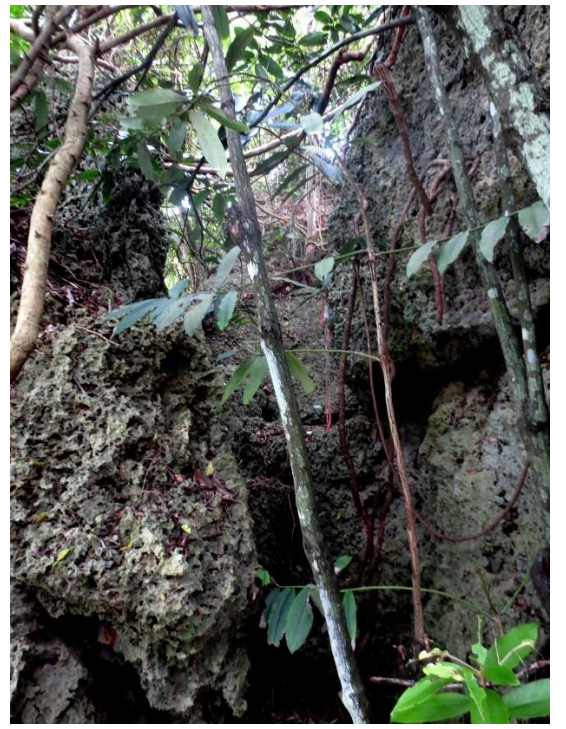
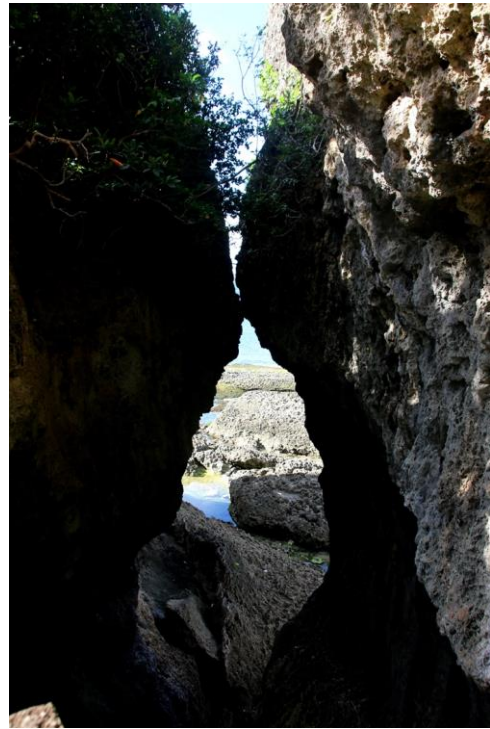


חוף שדאו





פארק אלואנבי



鵝鑾鼻公園  
環境質化及清潔維護費  
全票  
新台幣 60 元  
每人一張 隔日作廢  
海邊風浪大請注意安全

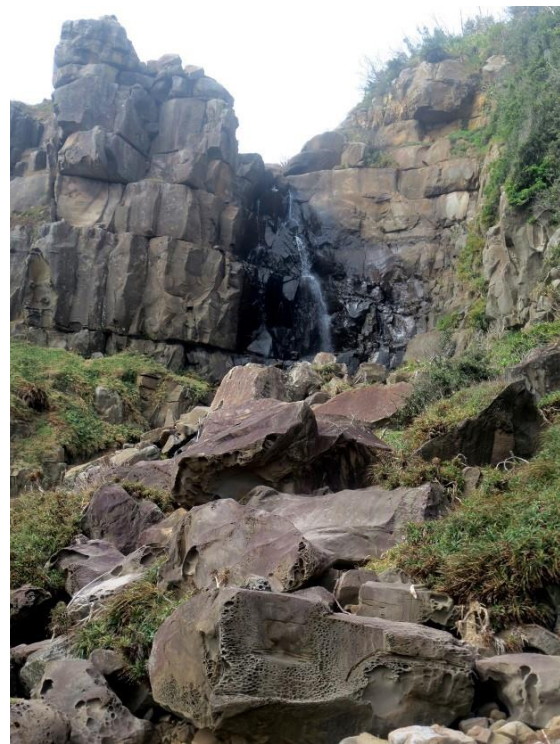
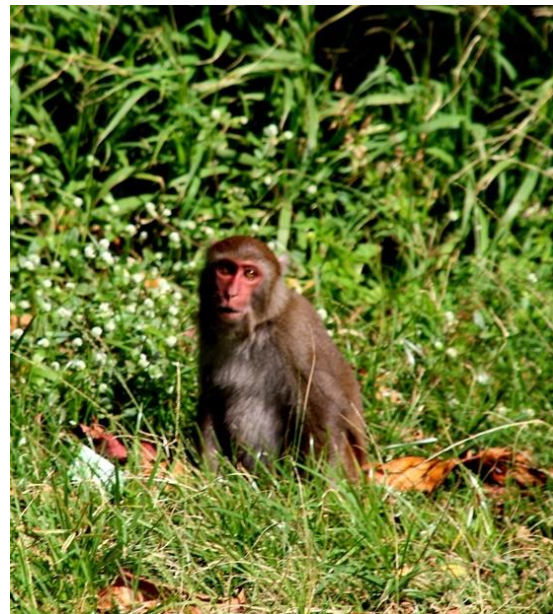
A33  
106.11.13  
No 892183

1. 需要諮詢或申訴，歡迎撥打 0800-861-321 免費專線電話。  
2. 本公園除吸菸區外，全面禁菸，違者罰 2000 元整。



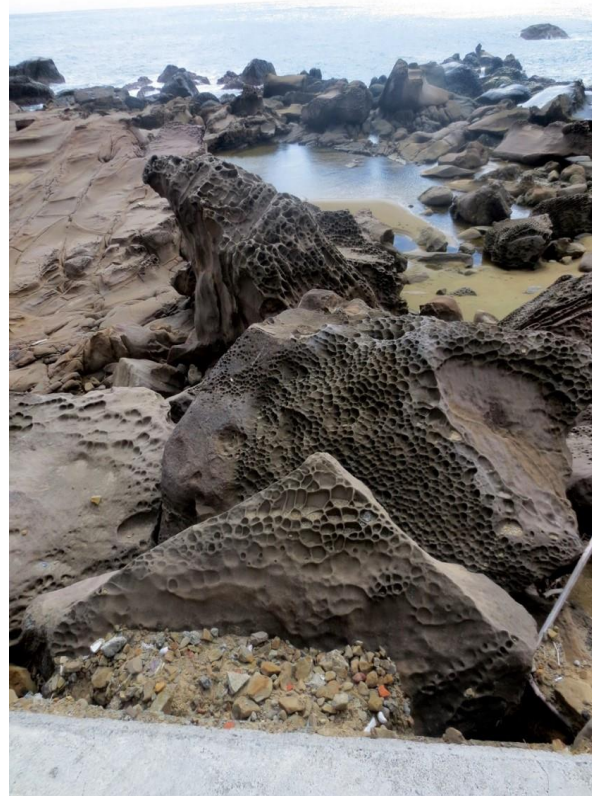
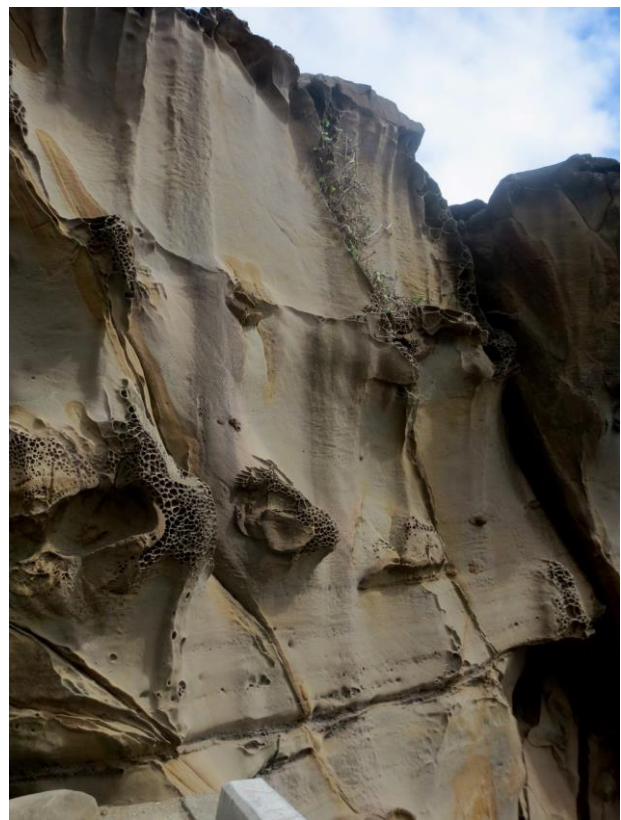
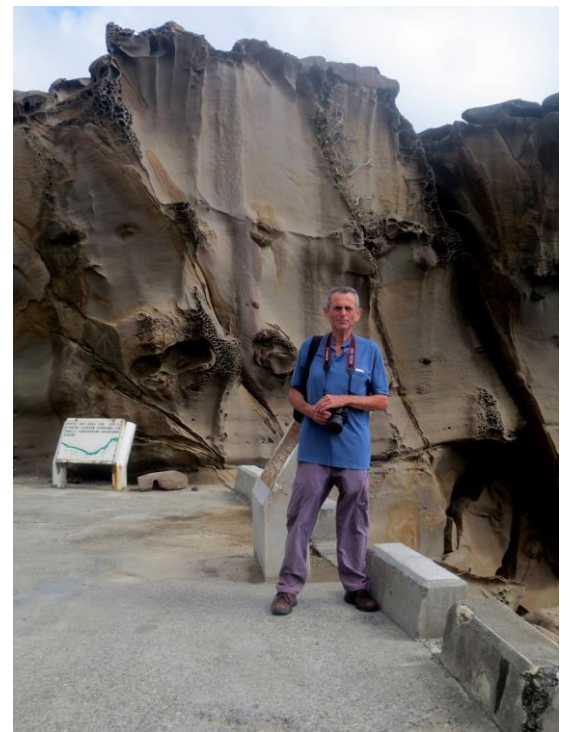
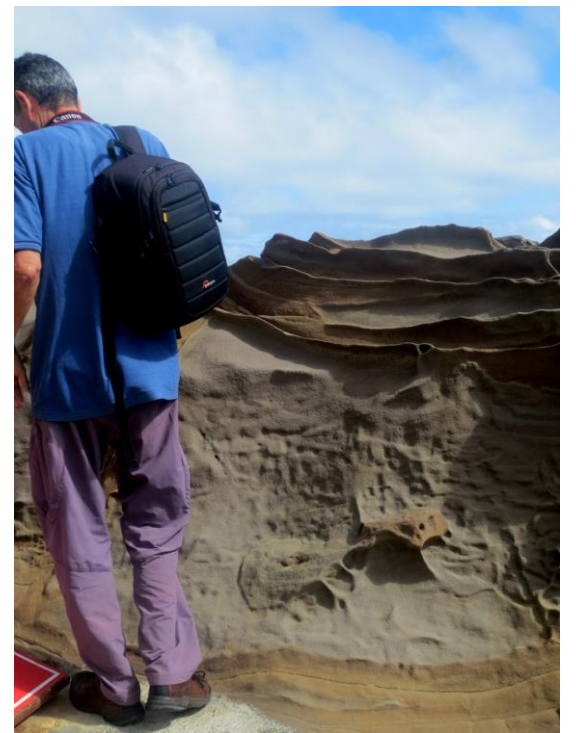


佳樂水風景區  
 \*持票免費搭乘觀光導覽車  
 使用說明：  
 限當天使用，逾期作廢。  
 (環境美化清潔維護費)  
 [全票] (優惠價80元)  
 773811



ג'יאלשווי







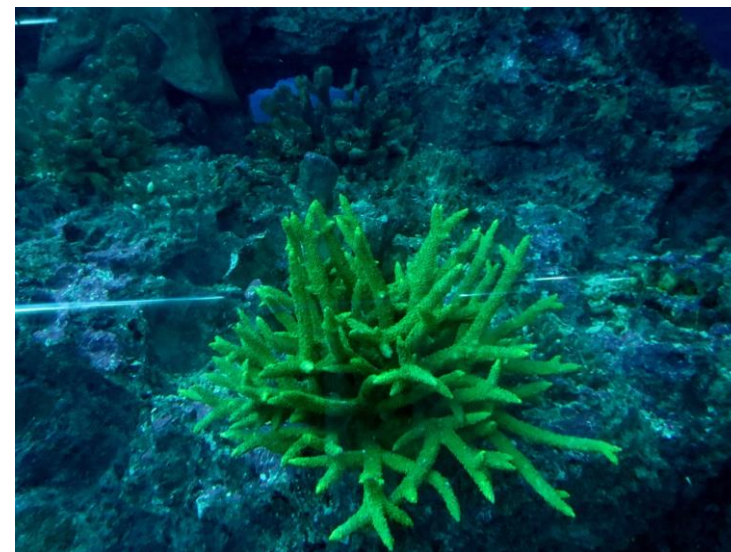
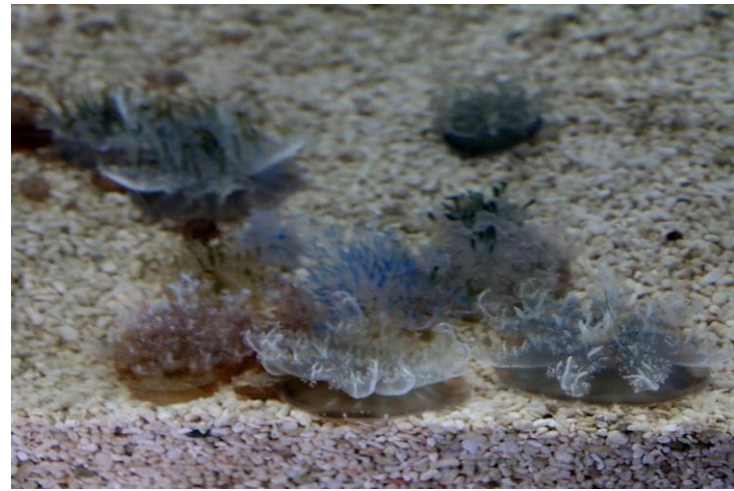


חומות הנגצ'ון

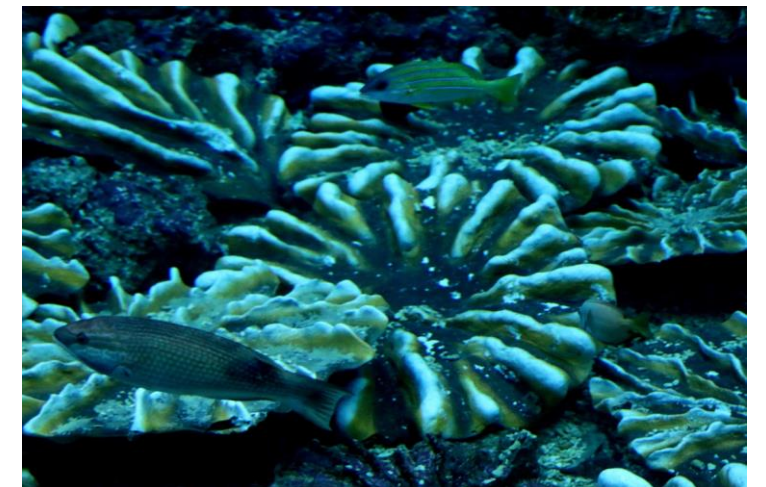
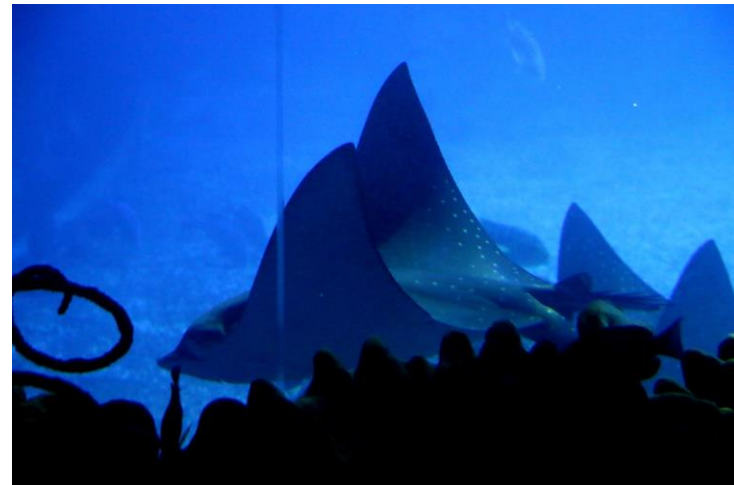




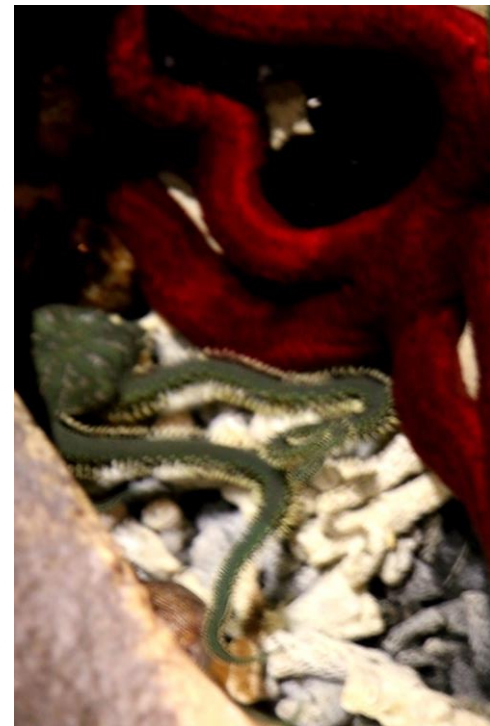
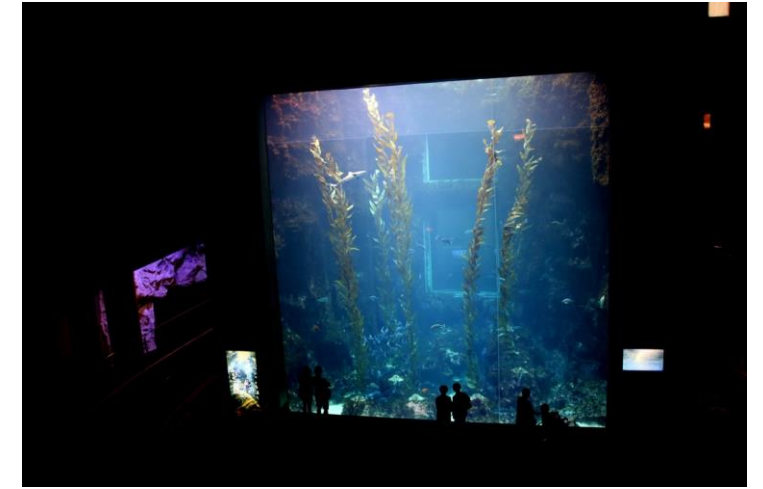
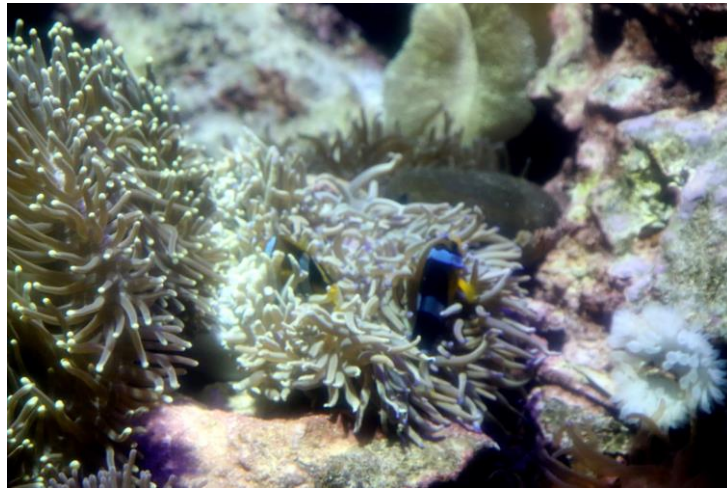
המוזיאון לביולוגיה ימית ואקווריום – צ'צ'נג













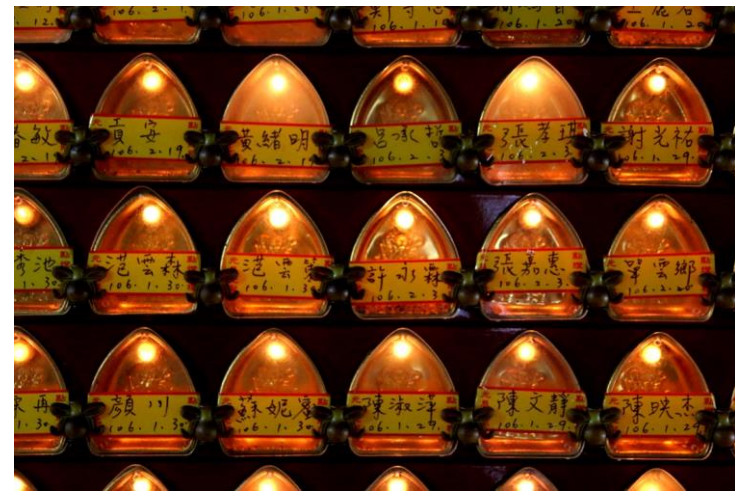
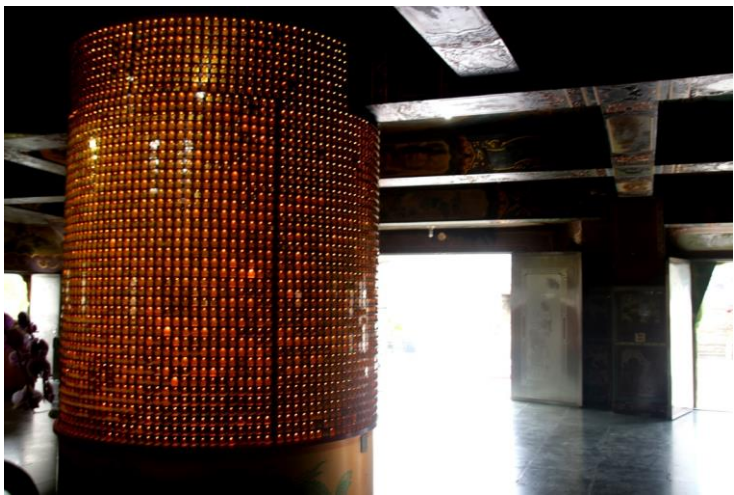


מקדש קינגשוי

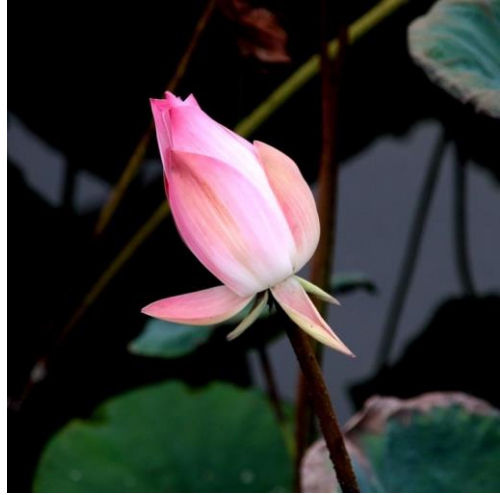
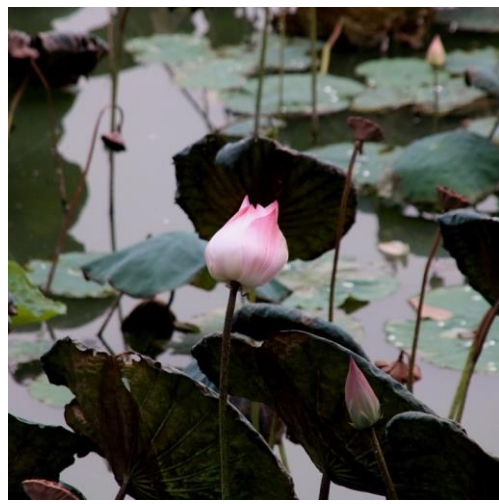
ביתן בייג'י קואנשיאו שיאנג די



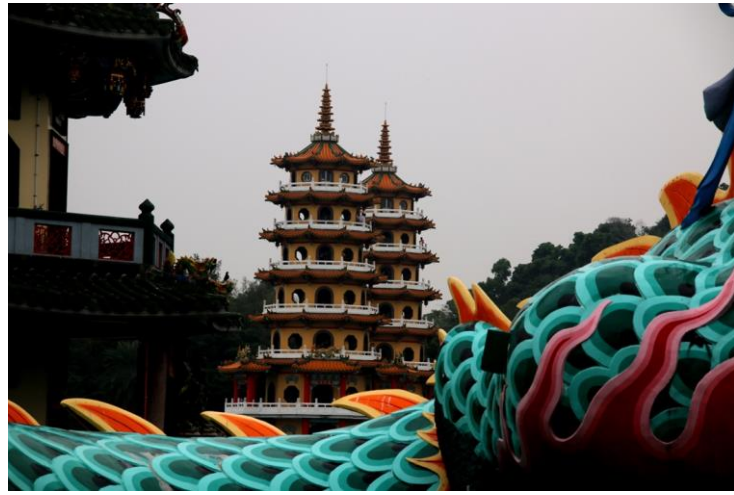




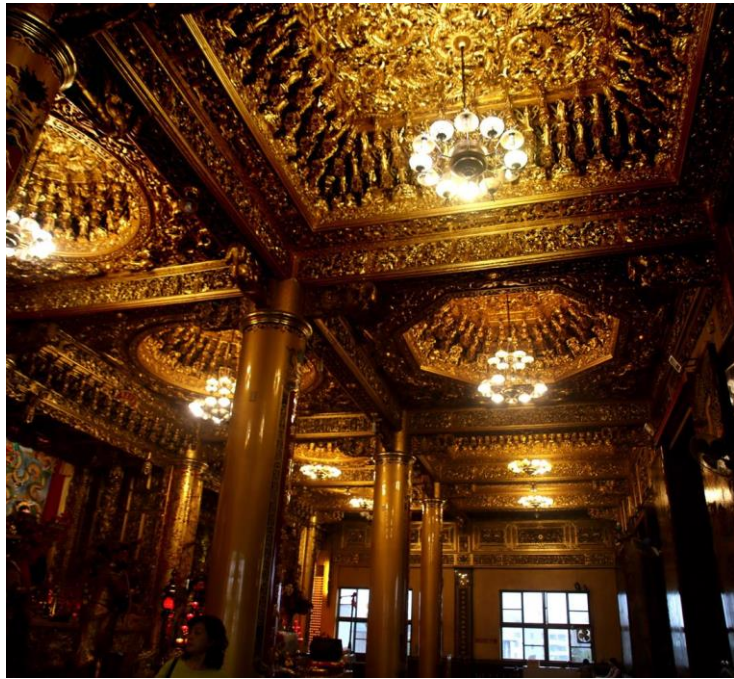
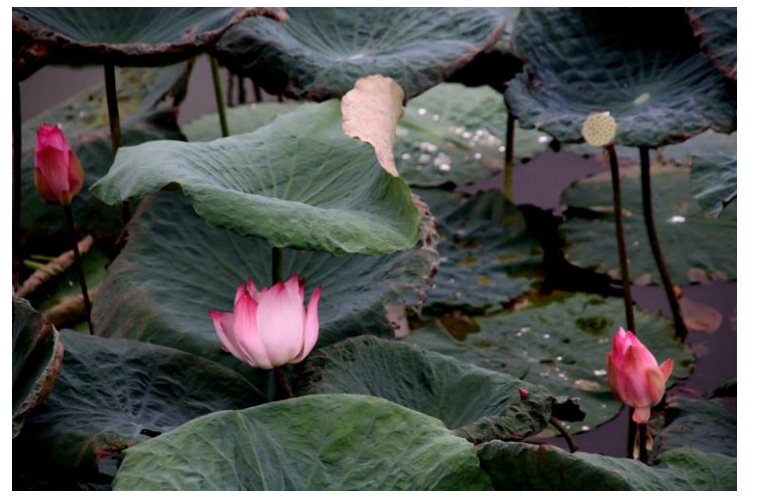




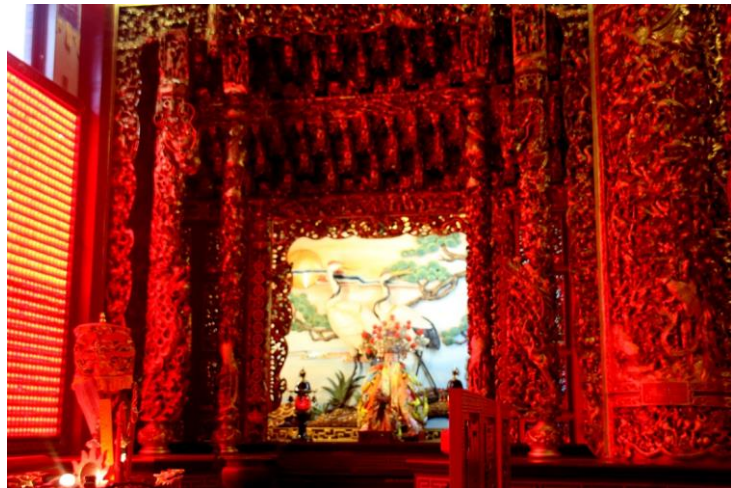
ביתני הסתיו והאביב













אגם הלוטוס



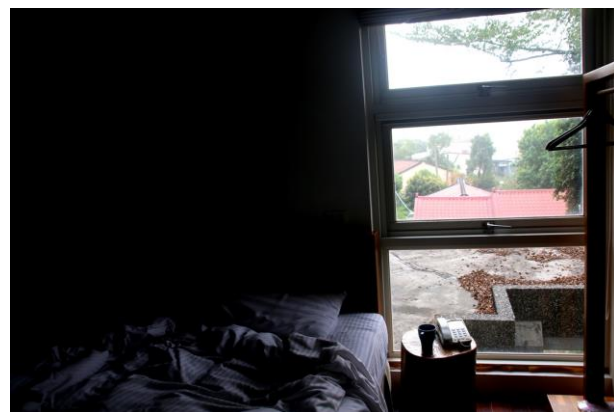
פגודות הדרקון והנמר



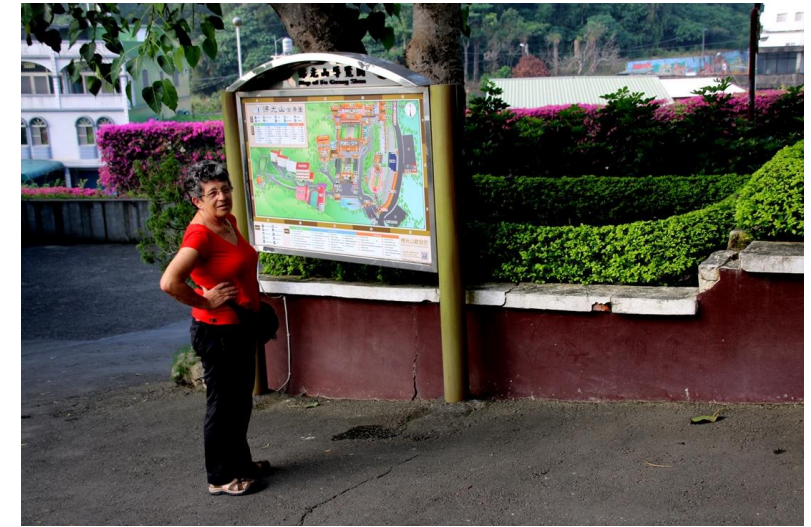


**途中家舍**  
 HOME WAY HOME.COM

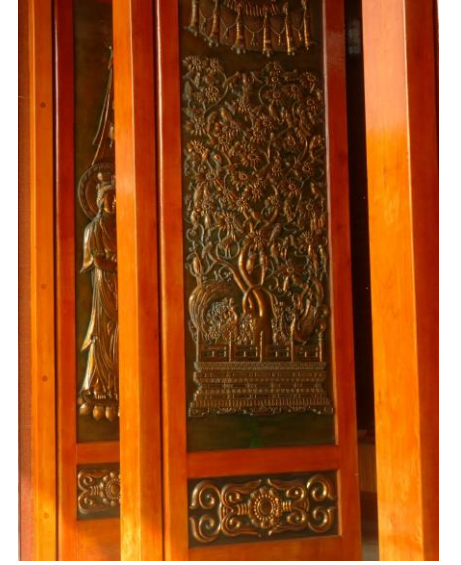
電話: 886+07-6563891 fax: 07-6563628  
 地址: 高雄南區大樹區三和村三和路120-1號



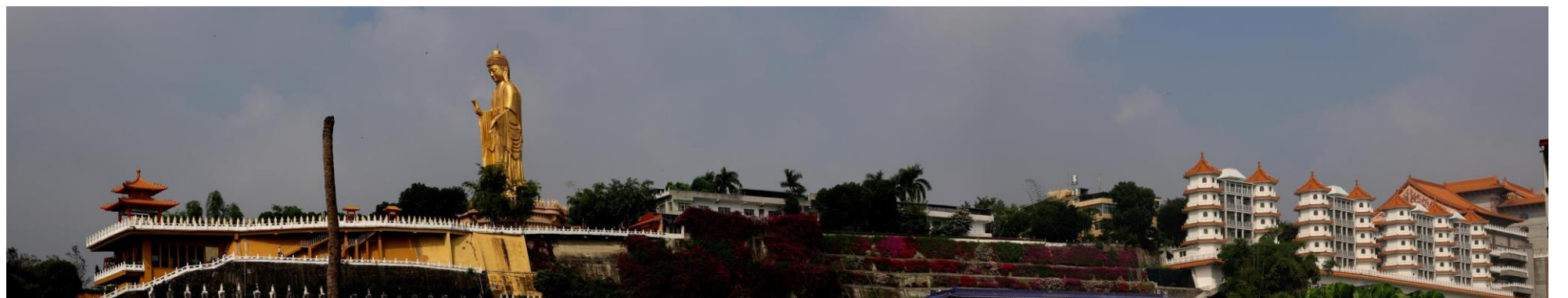
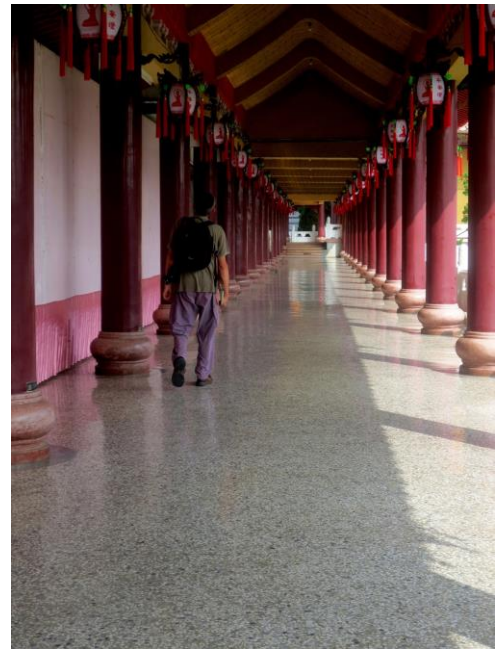
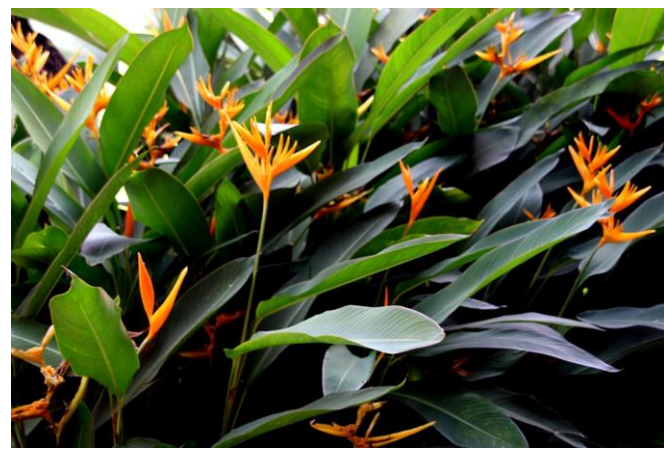






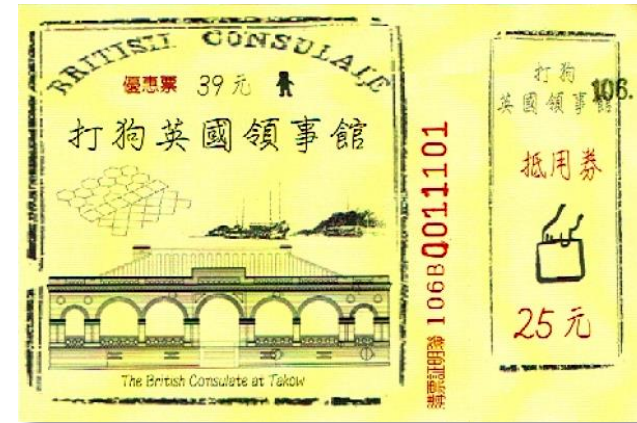








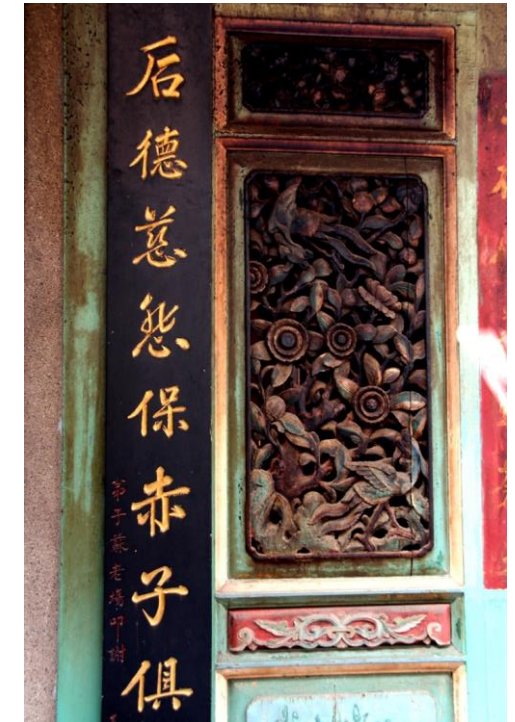
בית  
הקונסול  
הבריטי







מקדש קיסרית השמיים











ווטאי - הכנסיה







הבית עם העץ



<p><b>古蹟 Pass 券</b> 150元 環球古蹟</p>	<p><b>吉祥寺點</b> ☎ 06-2205647 08:30AM-09:30PM 臺南市中西區 民族路二段212號</p>
<p><b>安平樹屋</b> ☎ 06-3913901 08:30AM-05:30PM 臺南市安平區 古樓街108號</p>	<p><b>安平古堡</b> ☎ 06-2267348 08:30AM-05:30PM 臺南市安平區 延平路82號</p>
<p><b>億載金城</b> ☎ 06-2951504 08:30AM-05:30PM 臺南市安平區 光州路3號</p>	<p><b>國區景點</b> ☎ 06-2932925 09:00AM-06:00PM 臺南市安平區 安慶路121號(佛)</p>



המצודה



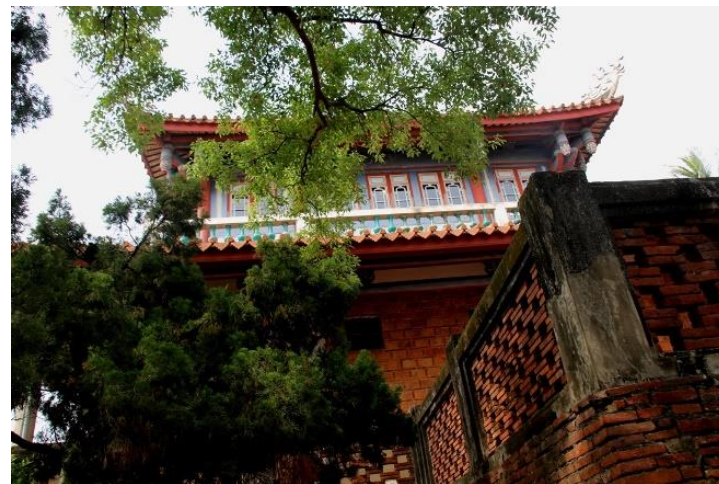




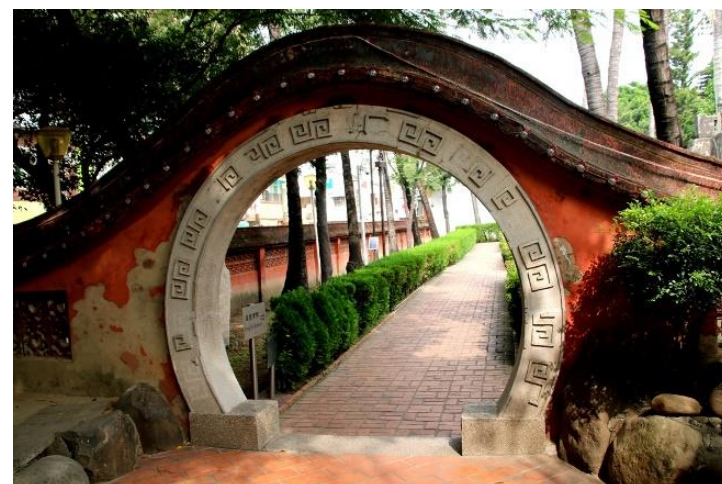
מקדש מאזו







מגדל צ'יקאן





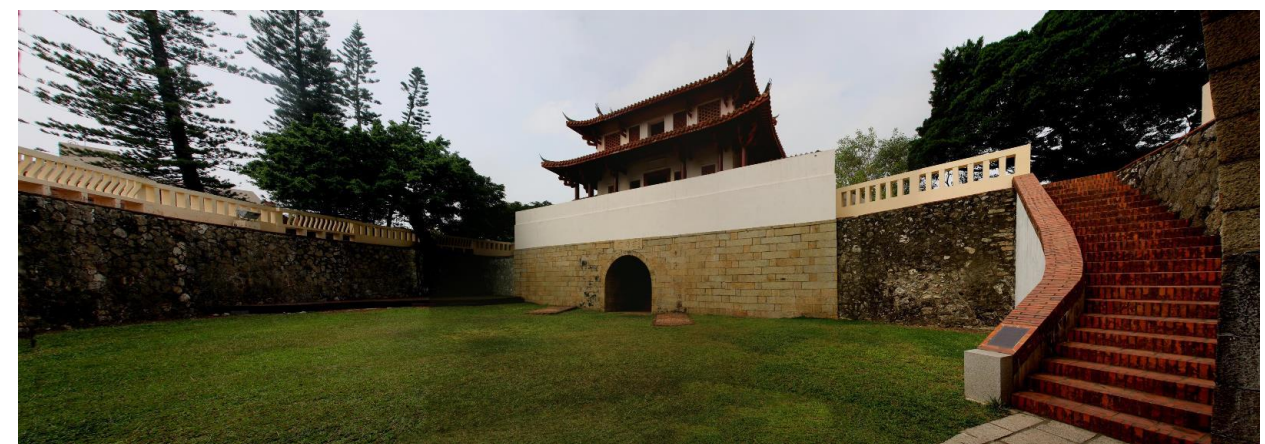






שוק הדגים

השער הדרומי

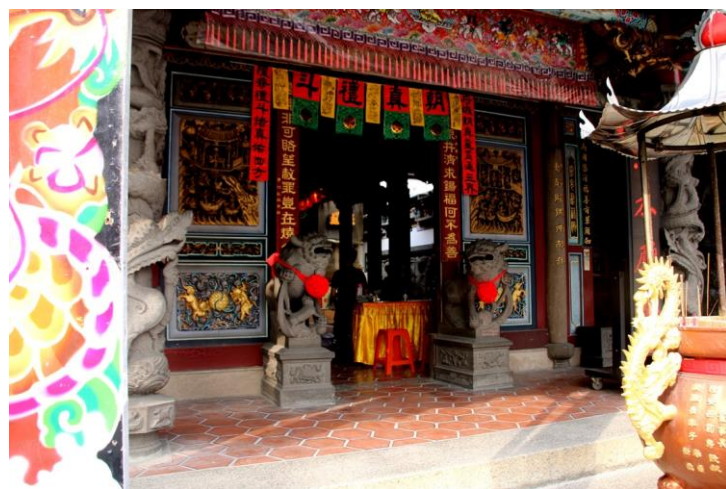




מקדש קונפוציוס







שוק לילה באנפינג