

# Principal Sights

- TAROKO NATIONAL PARK** ★★★ Highly recommended
- Green Island (Ludao)** ★★ Recommended
- Anping Fort** ★ Interesting
- Beigang Other sight described in this guide.

**EAST COAST** Region



טאיוואן  
04-18/11/2017









גן השלום 2-28



משרד הנשיא







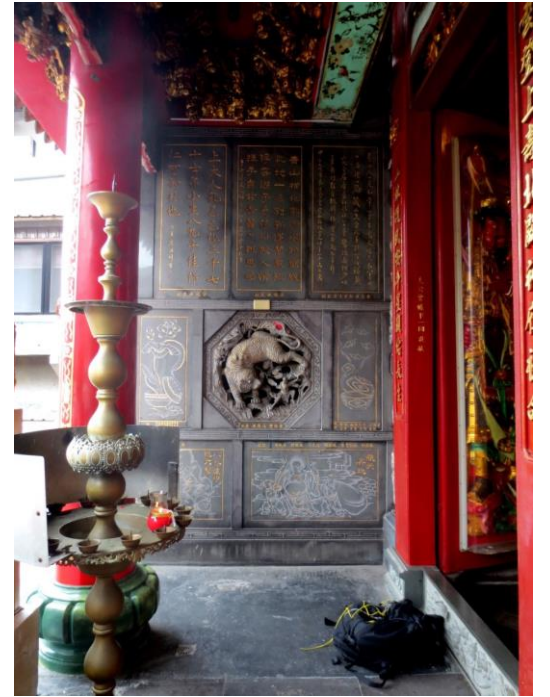
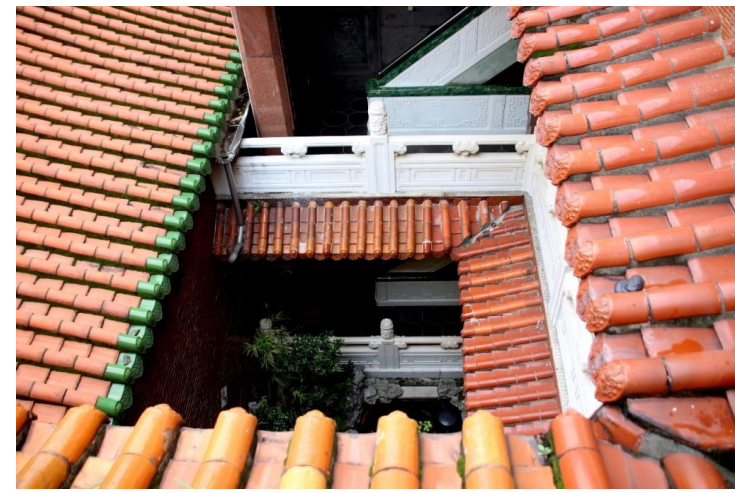
מקדש קינשוי







מקדש קינשאן



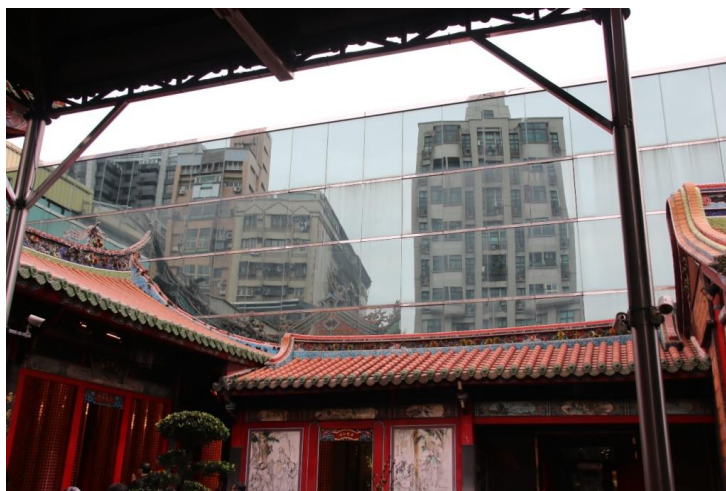




מקדש לונשן











מוזיאון ההסטוריה



הגן הבוטני



שער העיר



הכיכר הגדולה





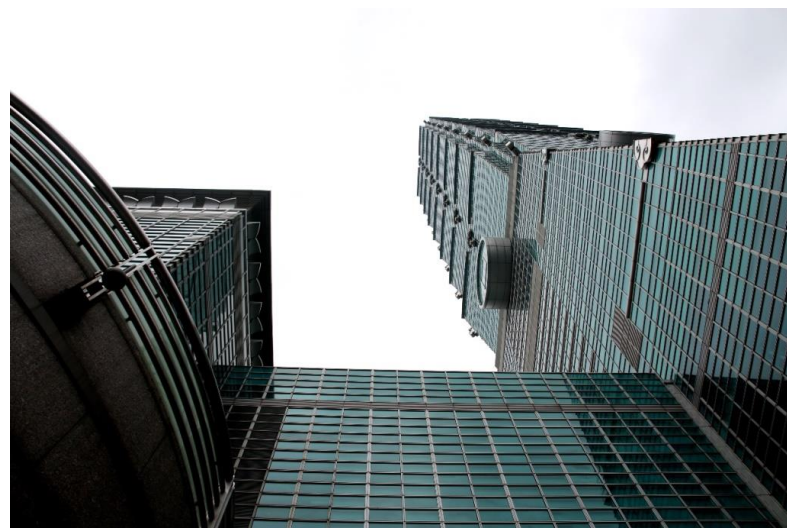


רחוב דיוהאן

מקדש קסיהאי







מרכז הסחר העולמי – טאיפיי 101



אנדרטת סון יאט-סן



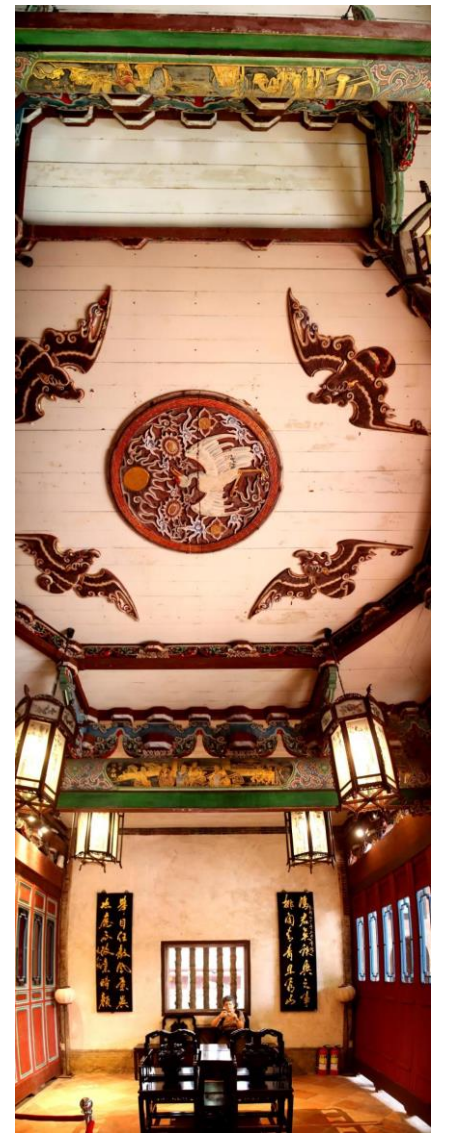
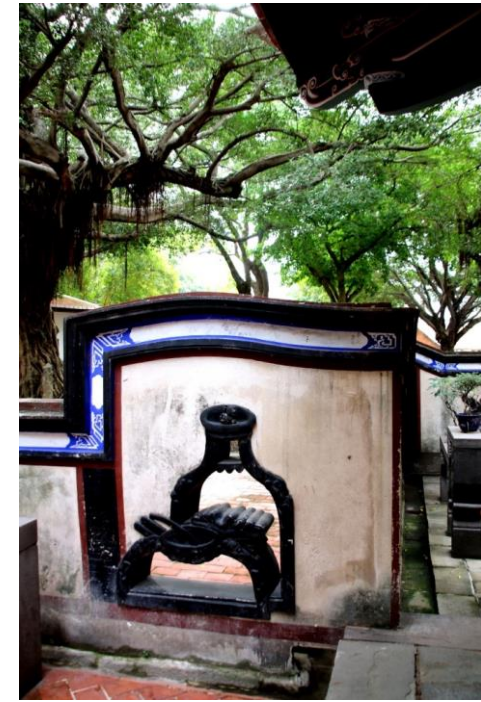




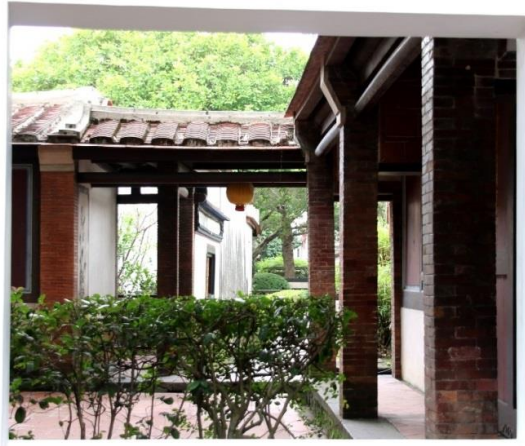
ד'ם דאס



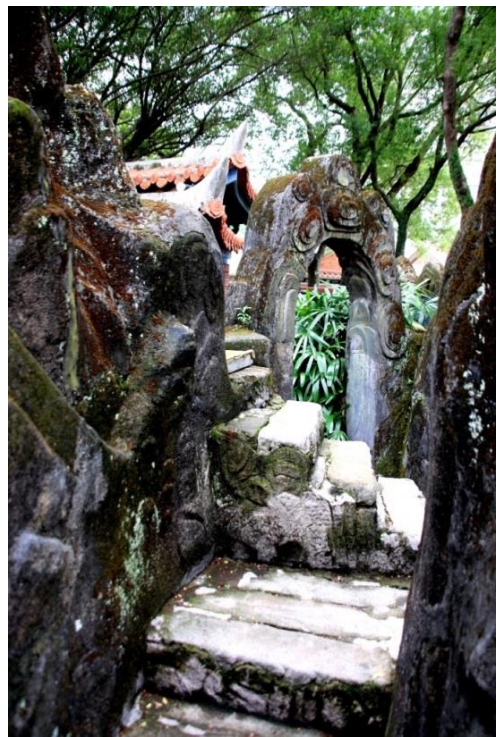
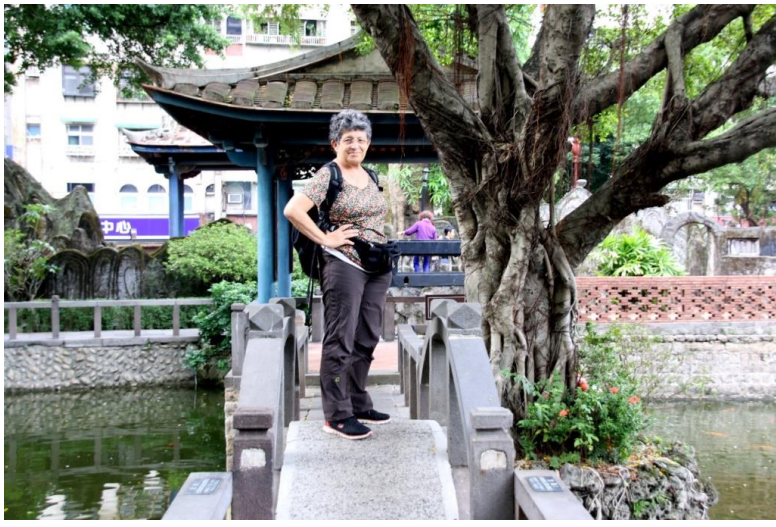






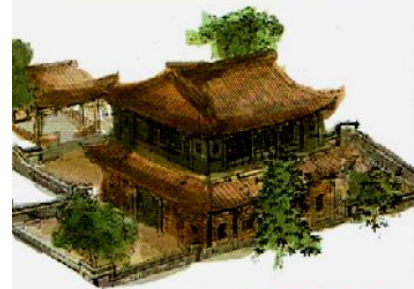






國定古蹟林本源園邸

The Lin Family Mansion and Garden



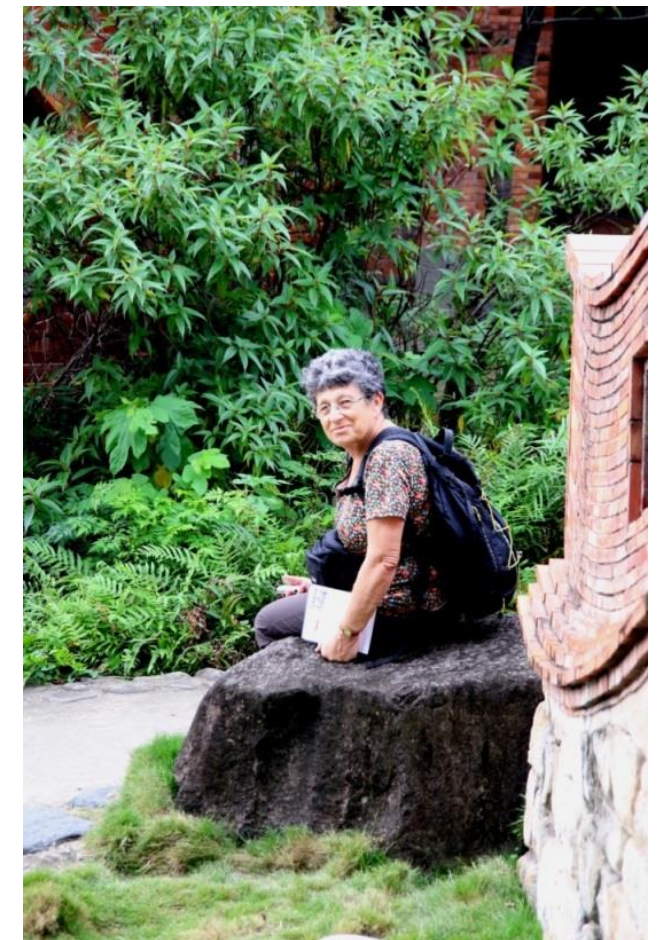
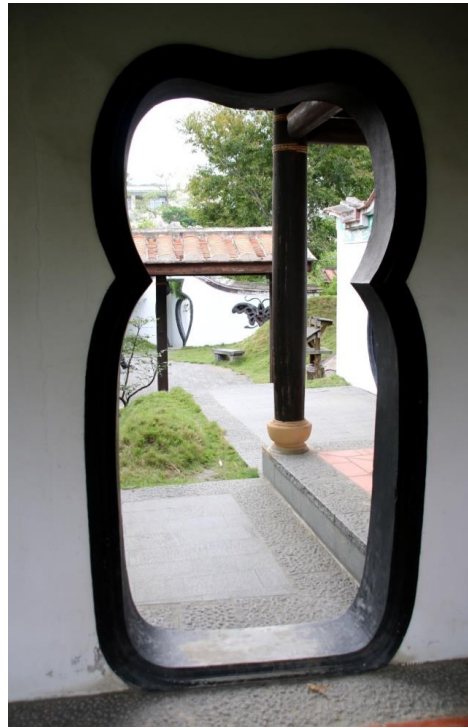
No. L 0029180

台北市政府文化局  
門票 General Admission

NT\$ 80











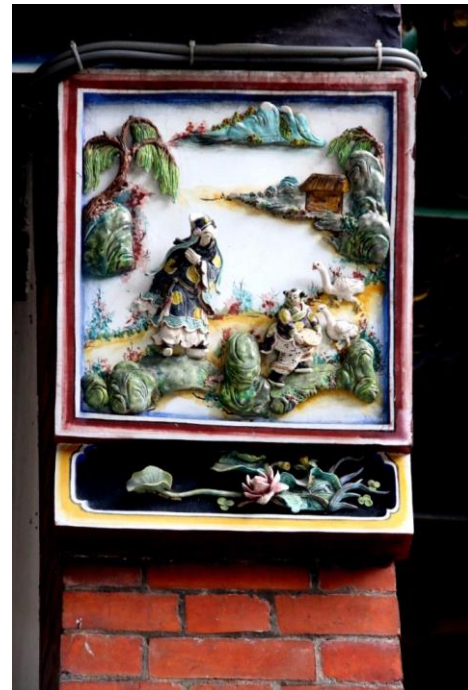
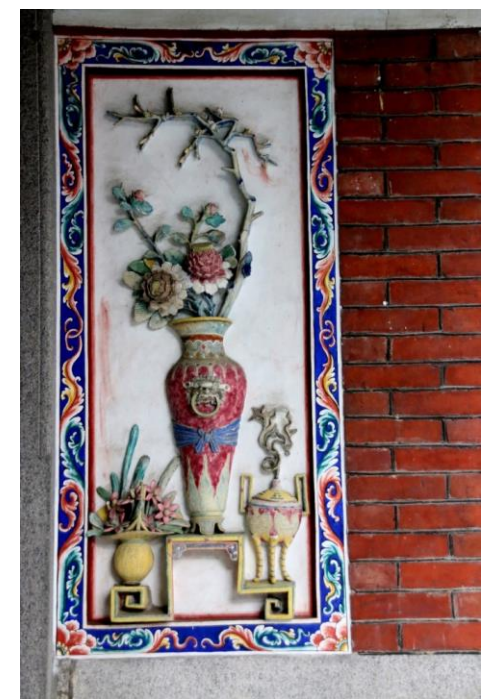




מקדש קונפוציוס











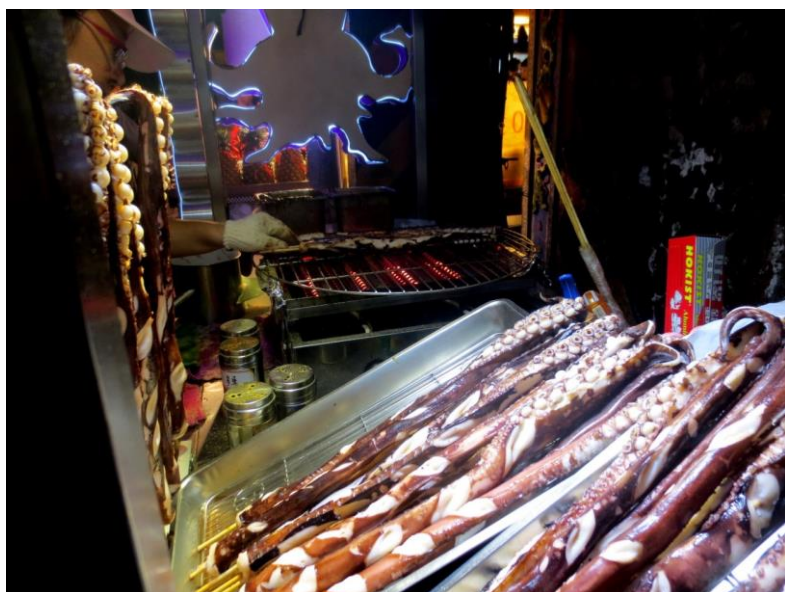








שוק הלילה בשילין



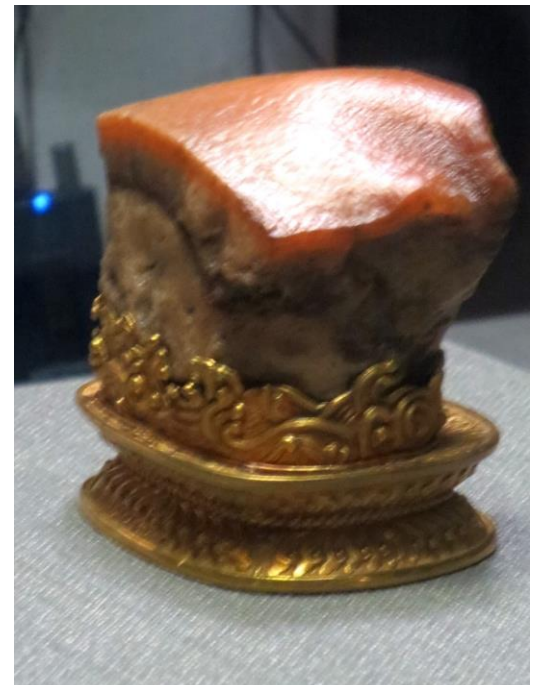




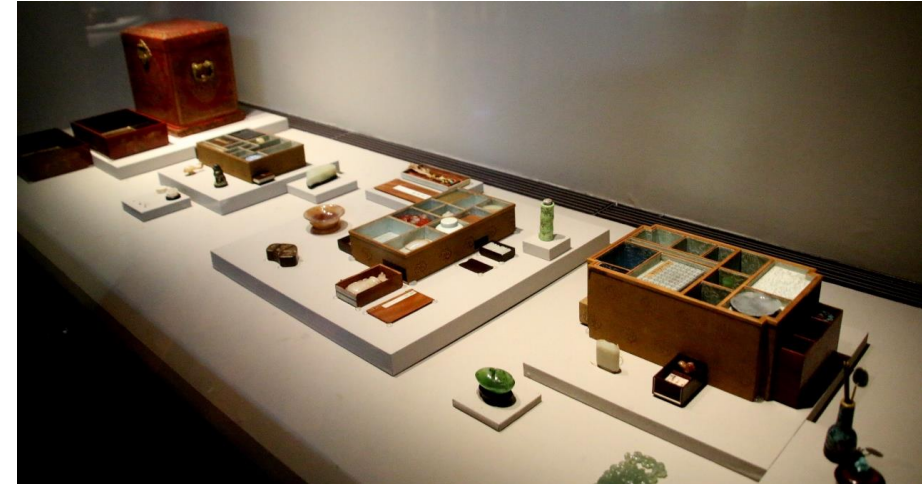
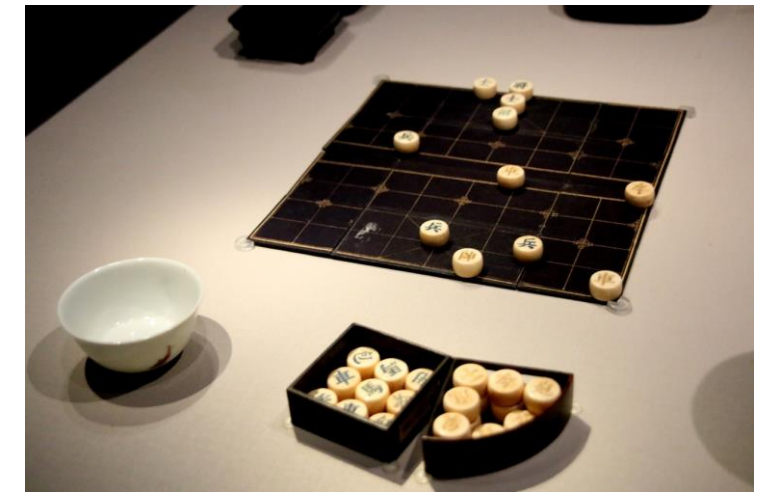
















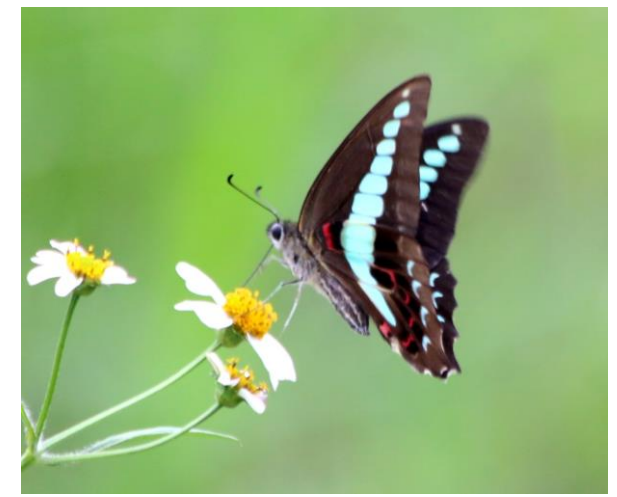
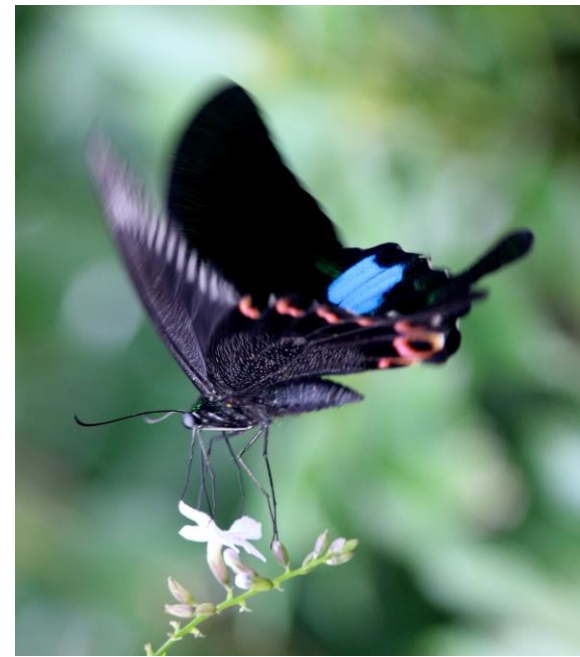
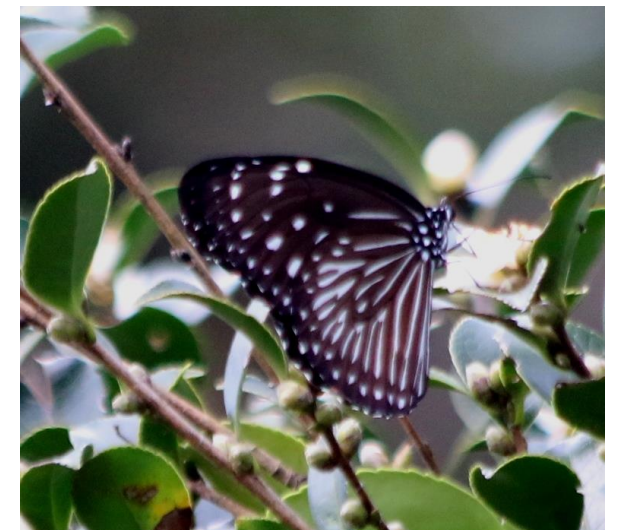
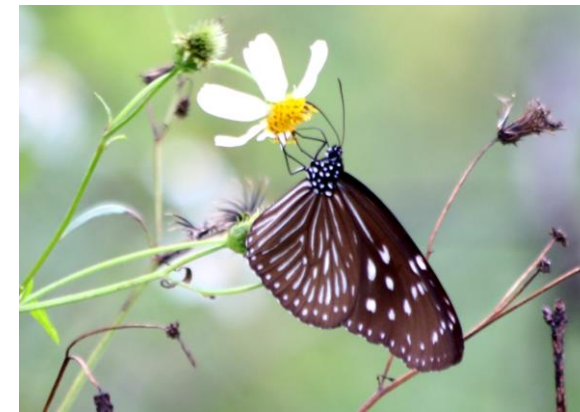
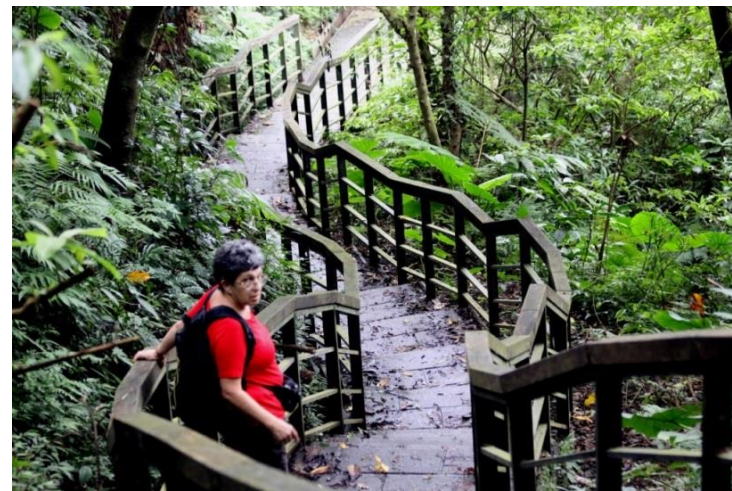
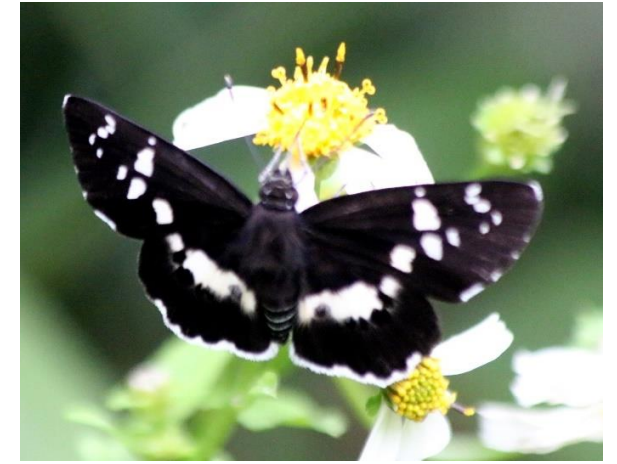
הגונדולה למקונג



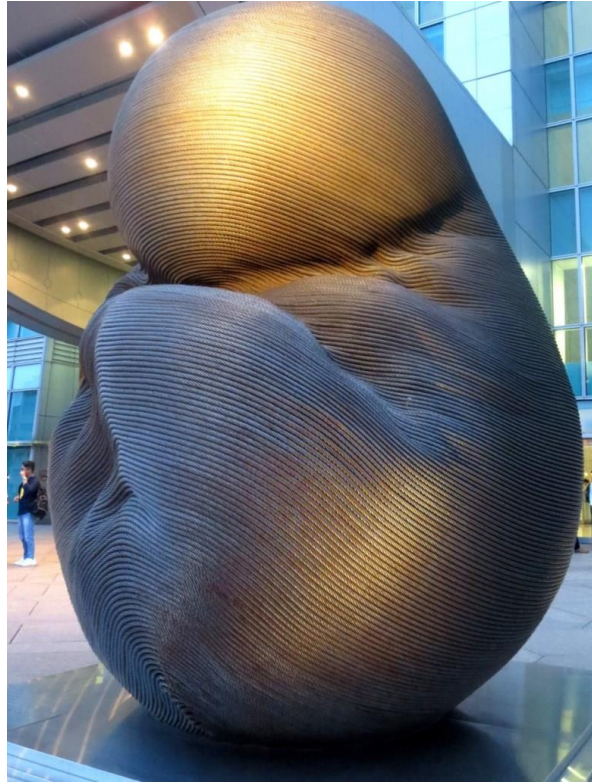




טיול במטעי התה





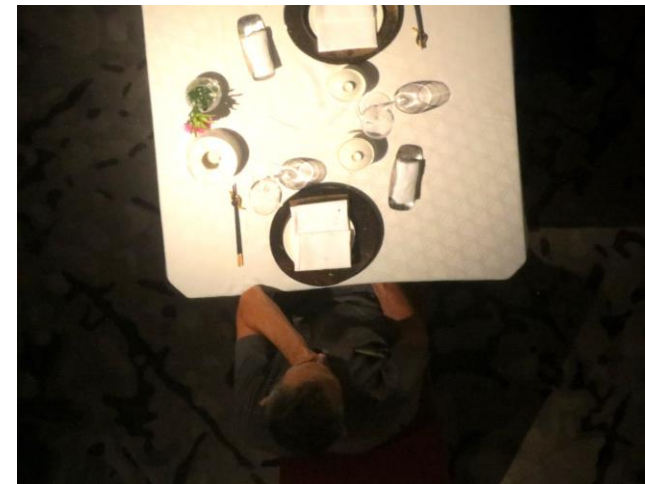
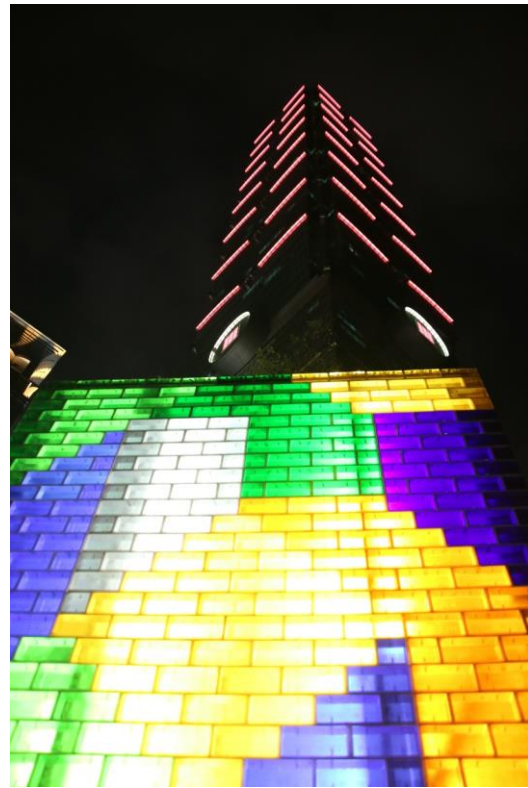


品名稱：無限生命  
年份：2013  
作者：康木祥 (1961 - )  
質：鋼鐵  
尺寸：高366 x 寬320 x 厚280公分

Title : Infinite Life  
Year : 2013  
Artist : Kang Muxiang (1961 - )  
Medium : Steel Cable  
Dimensions : H 366 x W 320 X D 280 cm

**Concept**  
The tightly coiled lines of "Infinite Life" trace out the image of life in its original form, a steel embryo reborn from the towering structure from which it came. As a reflection on the circle of life, using retired cable from the TAIPEI 101 Observatory high-speed elevator to create beauty from otherwise discarded material, the sculpture stands as testimony to TAIPEI 101's philosophy of environmental protection.

**Medium**  
The cable is from the World's Fastest Elevator from the World's tallest green building - TAIPEI 101 TOWER. It was in service from January 2005 to May 2010 taking 6.6 million visitors to the 89F Observatory. Each elevator uses ten cables, each being 447 meters in length and weighting 700kg. Each cable is composed of a steel core rope made from 49 steel wires, surrounded by 8 other steel ropes, each made of 25 steel wires - a total of 249 steel wires per cable. This work uses 4.5 rolls of cable, and the total length of its steel wires measures 500 Km, equal to the length of Taiwan's coastline from north to south.



101 ארוחת ערב במגדל