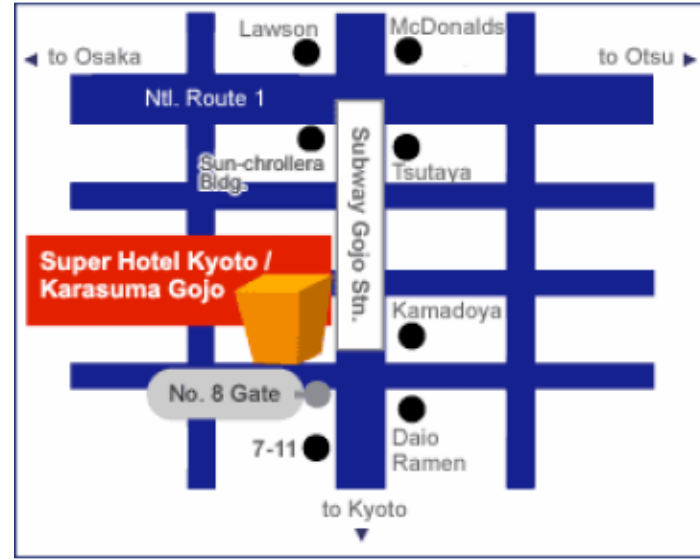


Kyoto



Kyoto 千戸
10-15/11/2008



הארמון המלכותי
10/11/2008

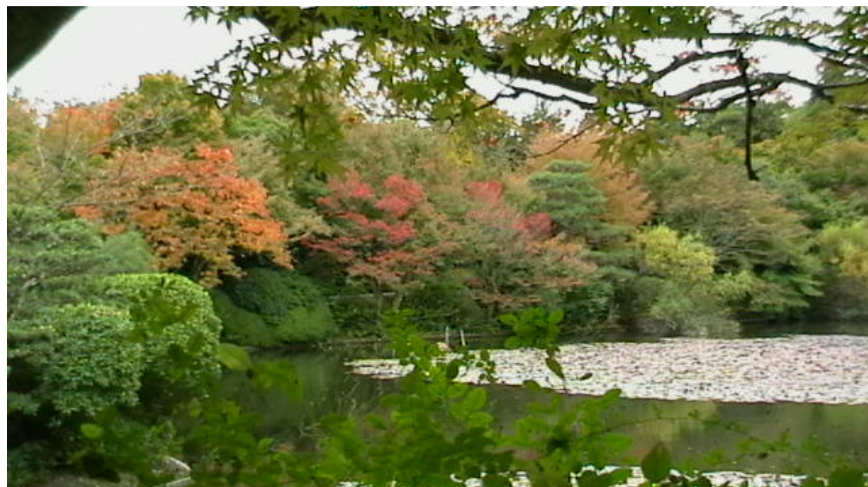






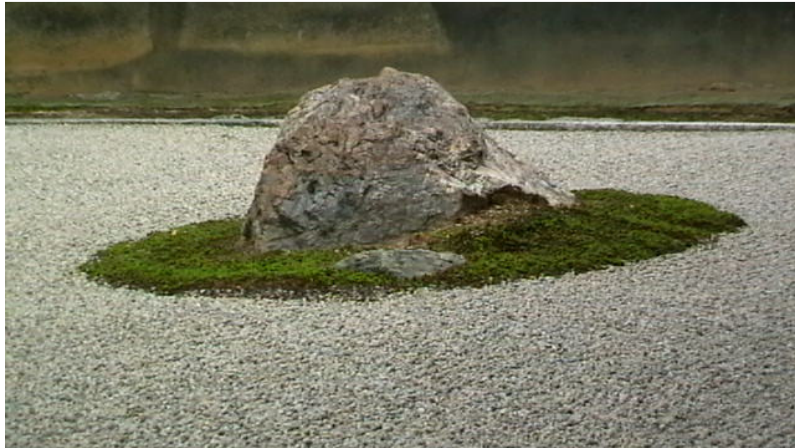
Kinkaku-ji
10/11/2008





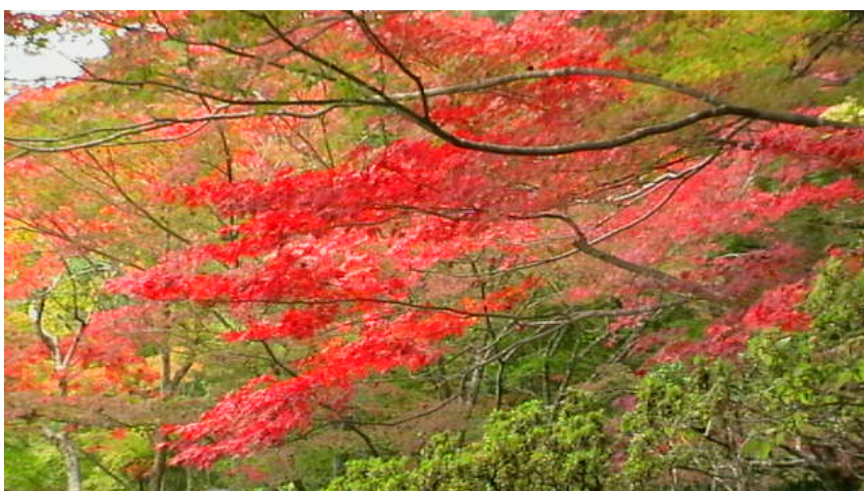


Ryoan-ji
10/11/2008



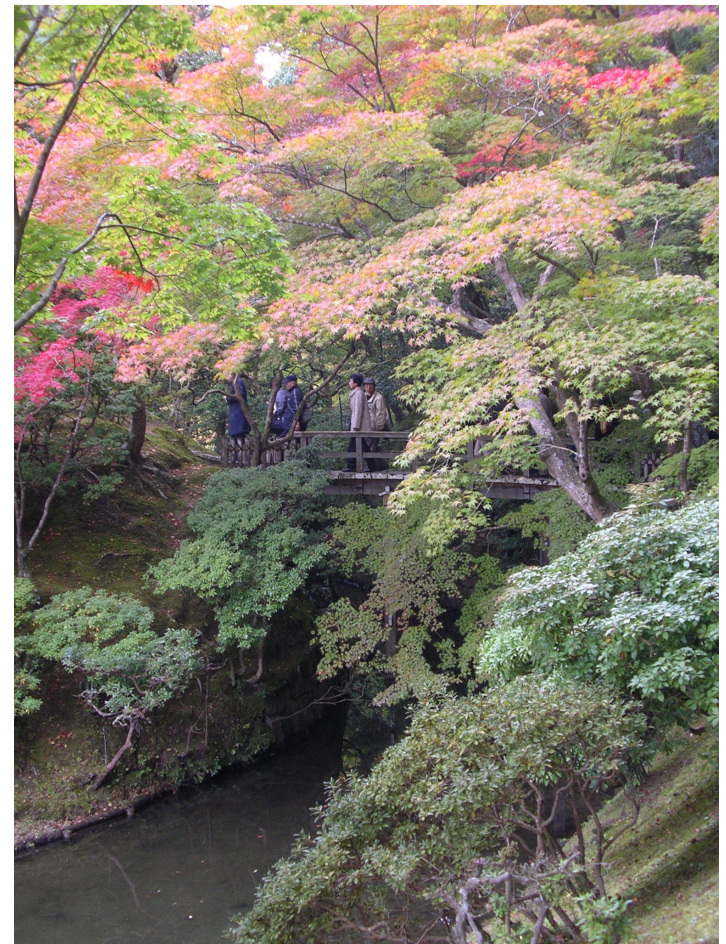


Shugakuin
11/11/2008













tChu:
 chief priest's chamber
 main room in Hojo, where
 the chief priest preaches
 sermon and contends
 about Zen truth with
 disciplinants. Behind of
 the chamber there is the
 place where they attends
 to the instructor as he
 is alive. The screen pic-
 ture "Ryu" a dragon, was
 painted in early Edo era.



檀越 檀家の者と和向が、
 と喫みの親しく会う間である。
Danna-no-ma:
 The room where the patrons
 who gave active support to
 the temple talked over tea
 with the chief priest. This ro-
 om was used for the chief
 priest to see especially
 intimate persons.



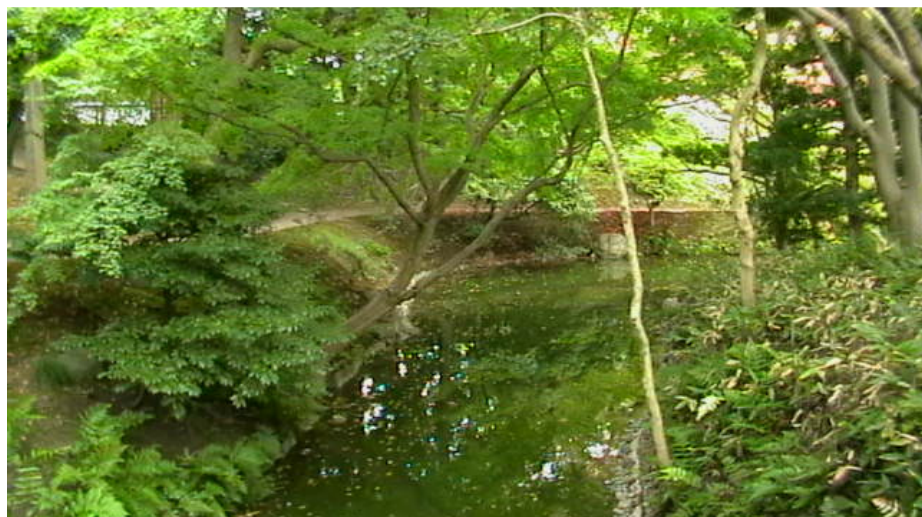
Kohrin-in - Daitoku-ji
11/11/2008

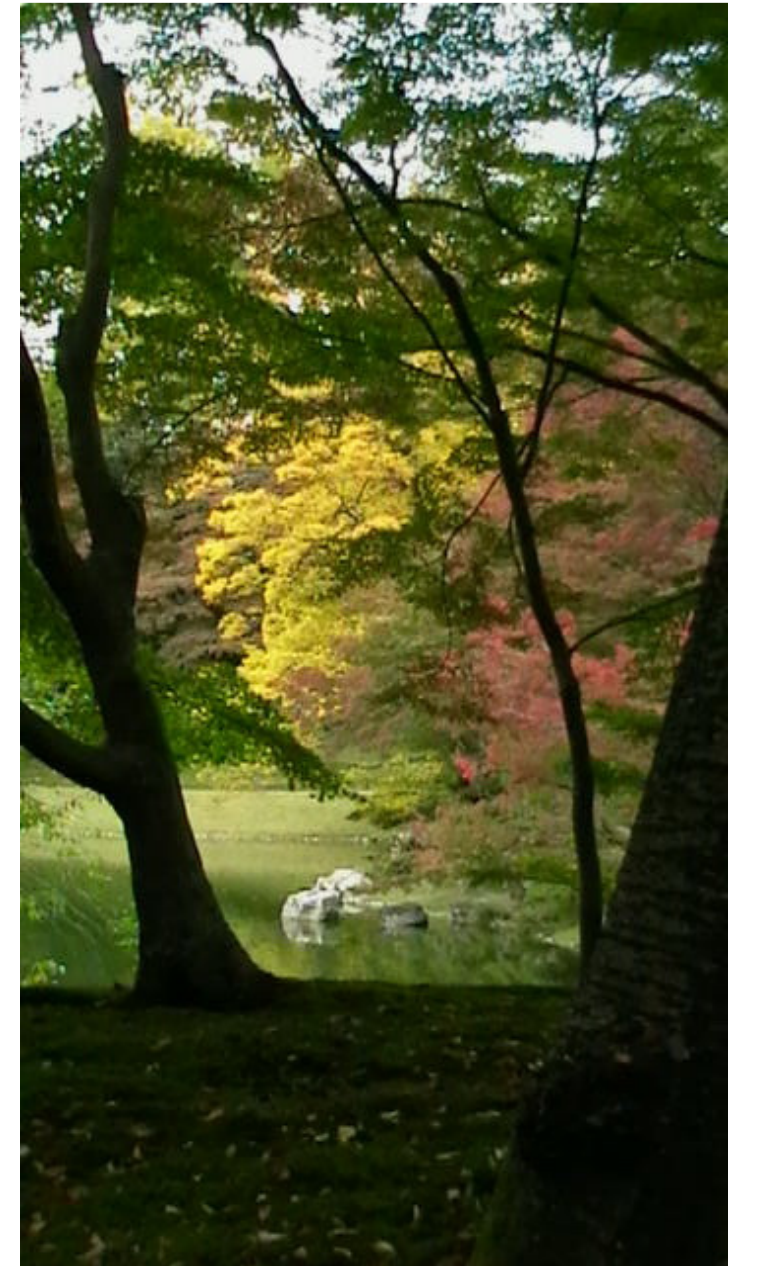
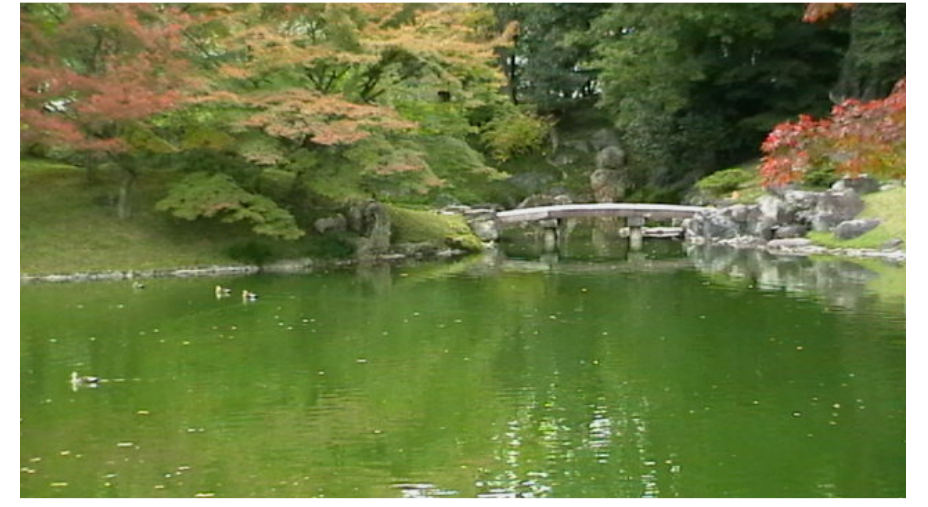


Ryogen-in - Daitoku-ji
11/11/2008



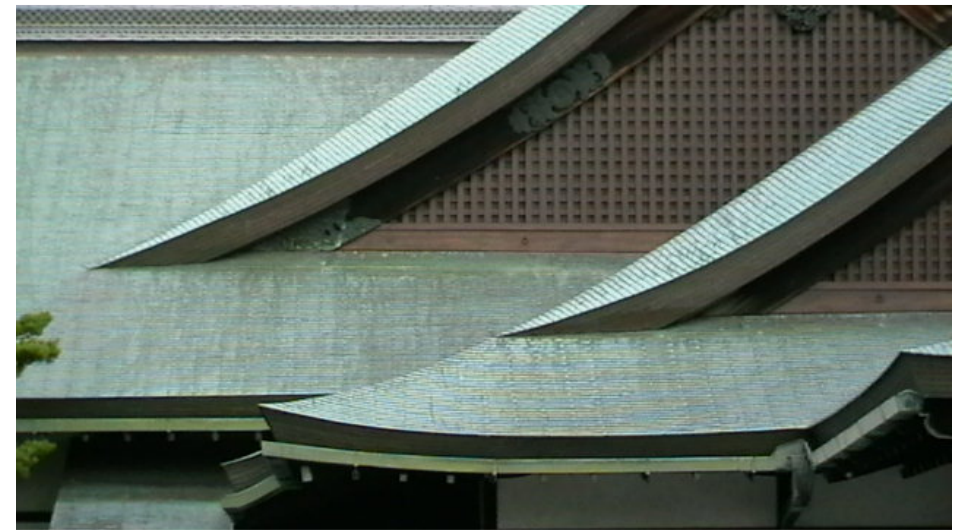
Sentio
11/11/2008









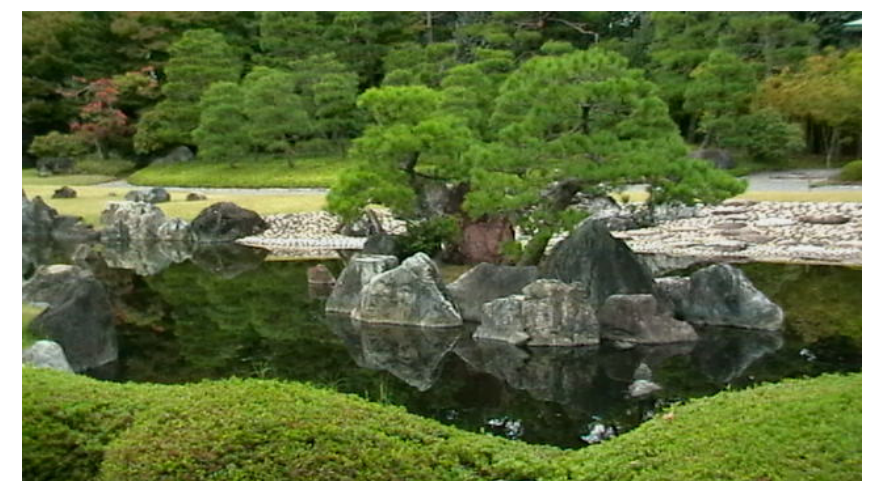


Nino-ji
11/11/2008





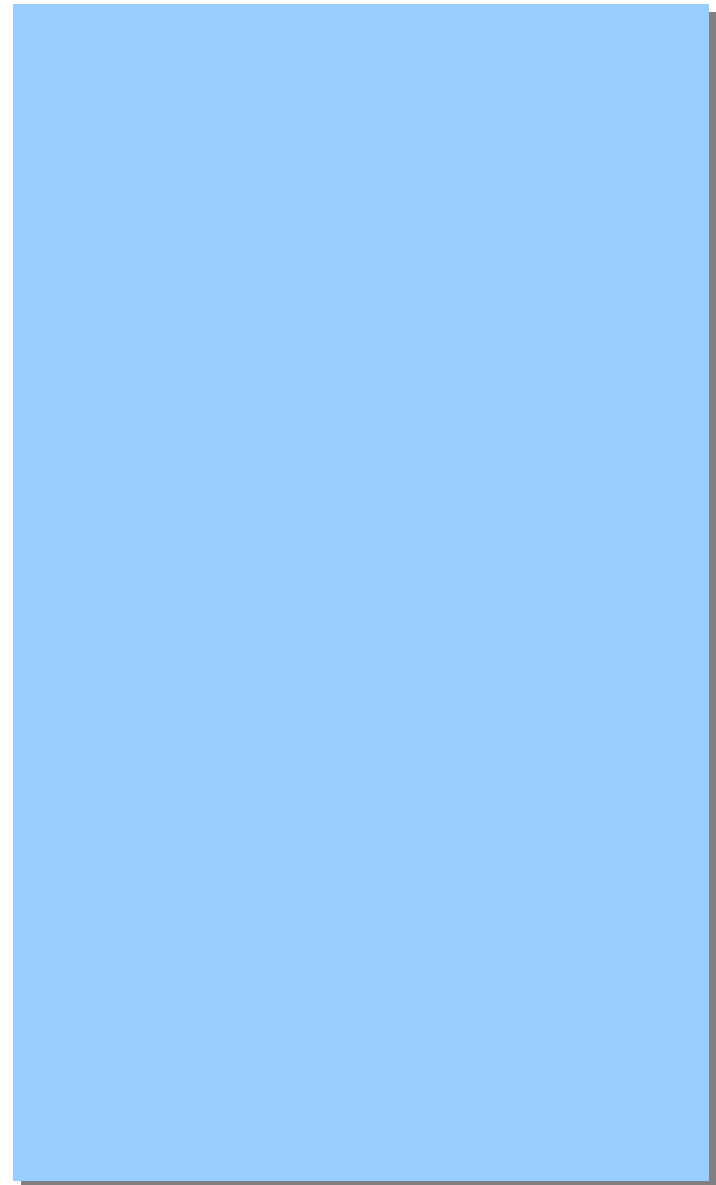


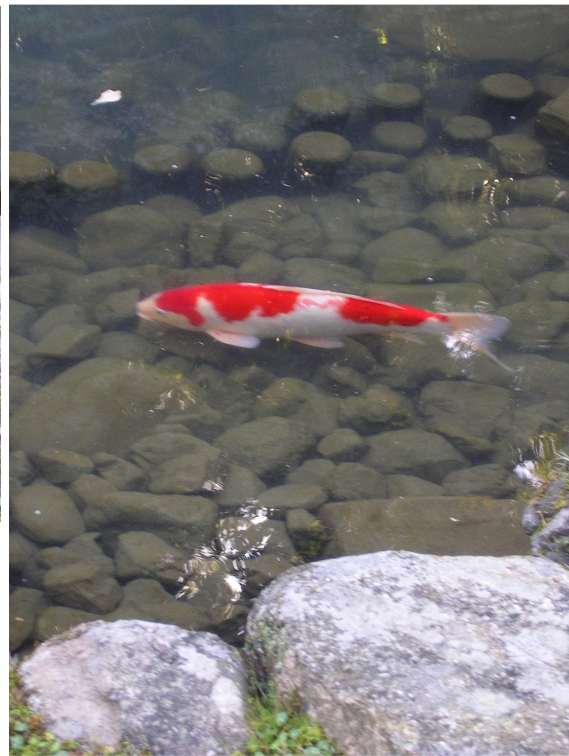
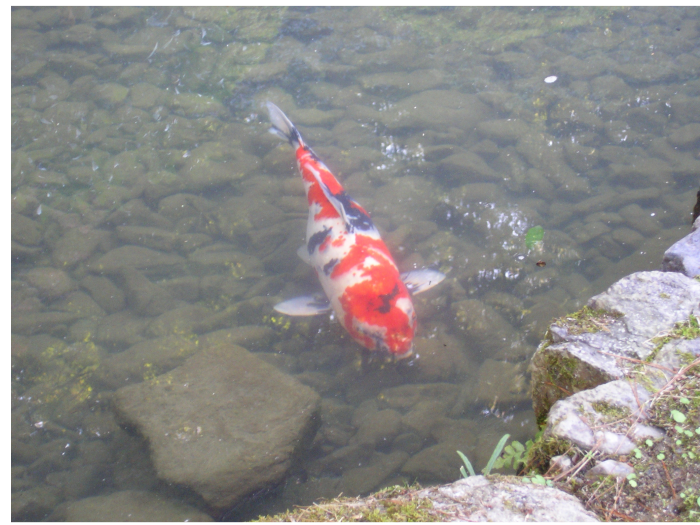
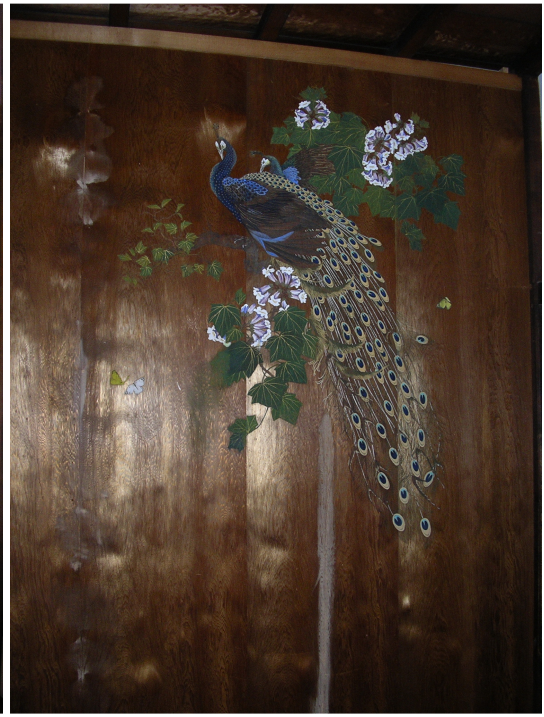
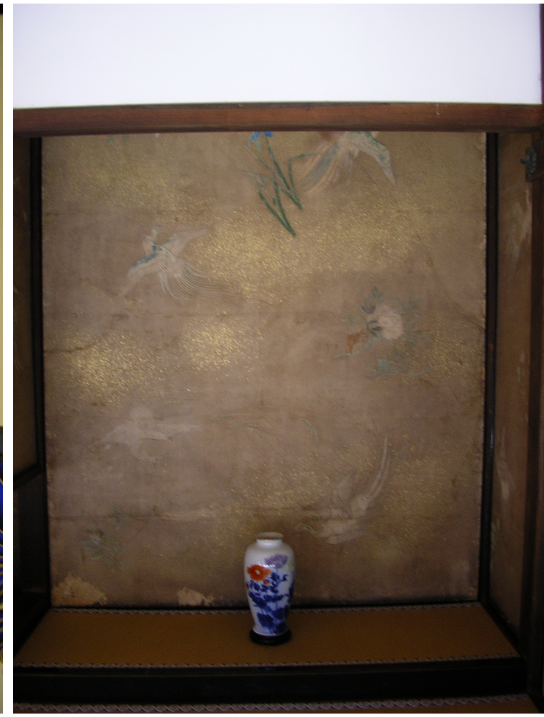


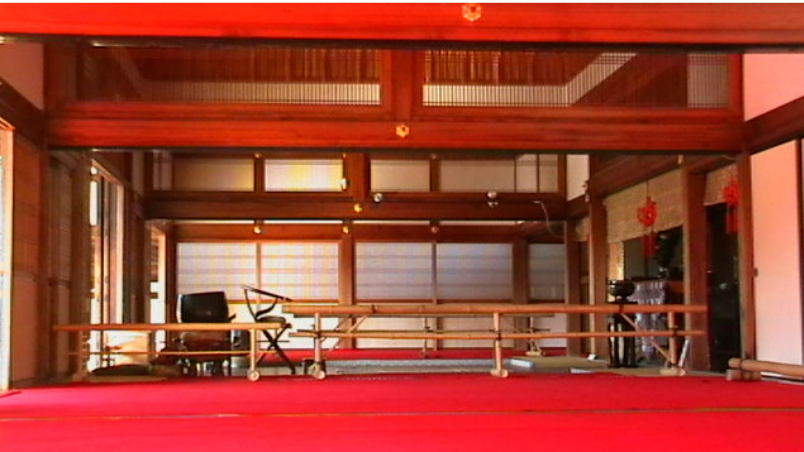
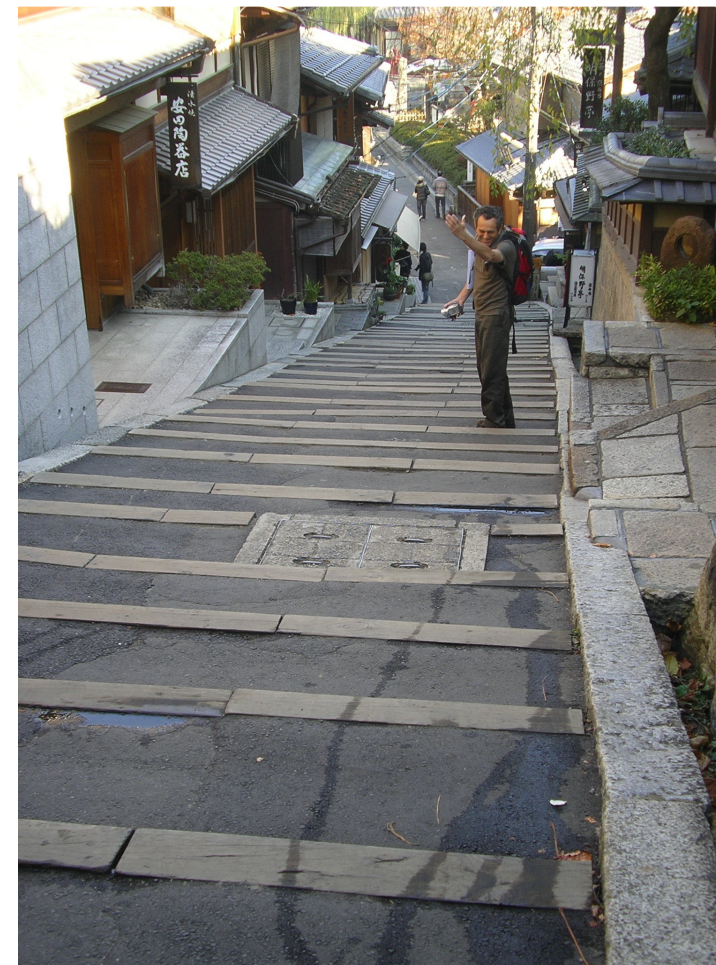




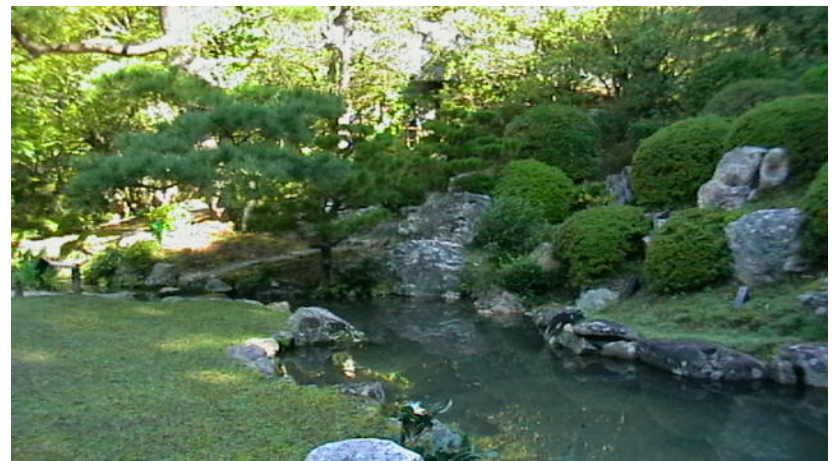
Gojozaka – Kiyo-mizu
13/11/2008

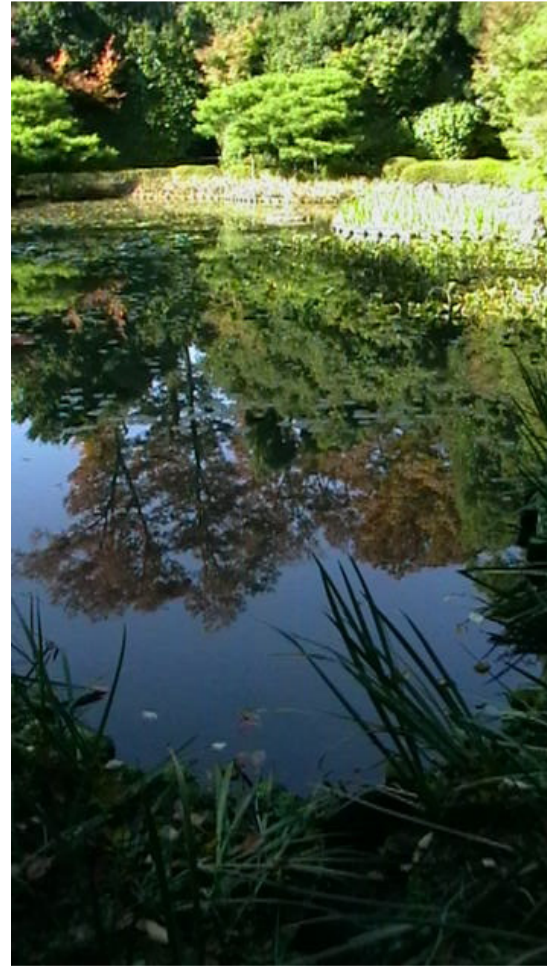
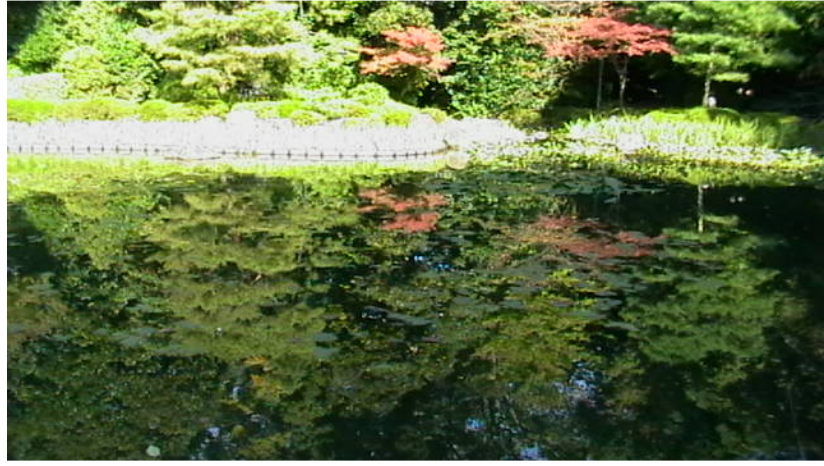


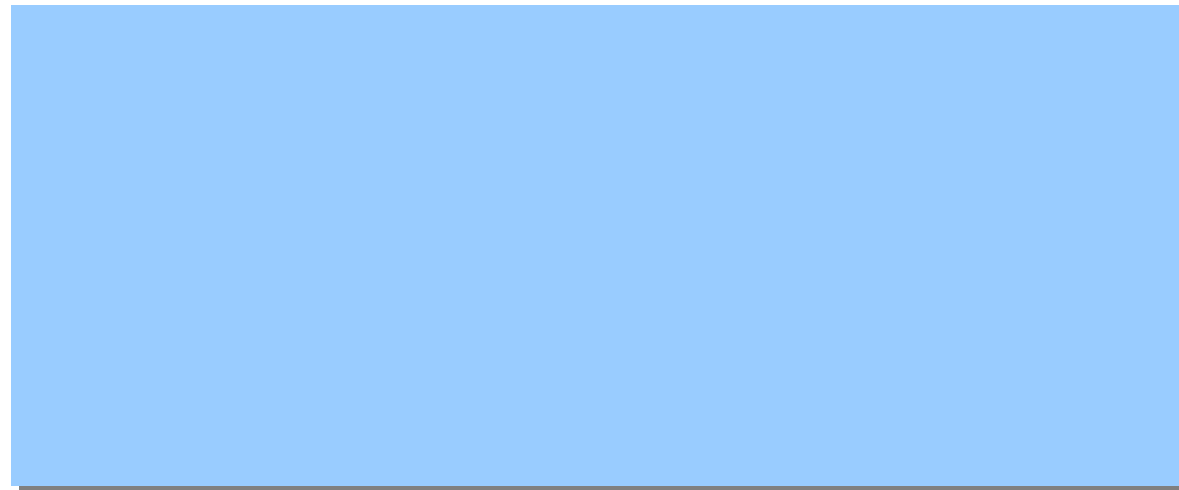






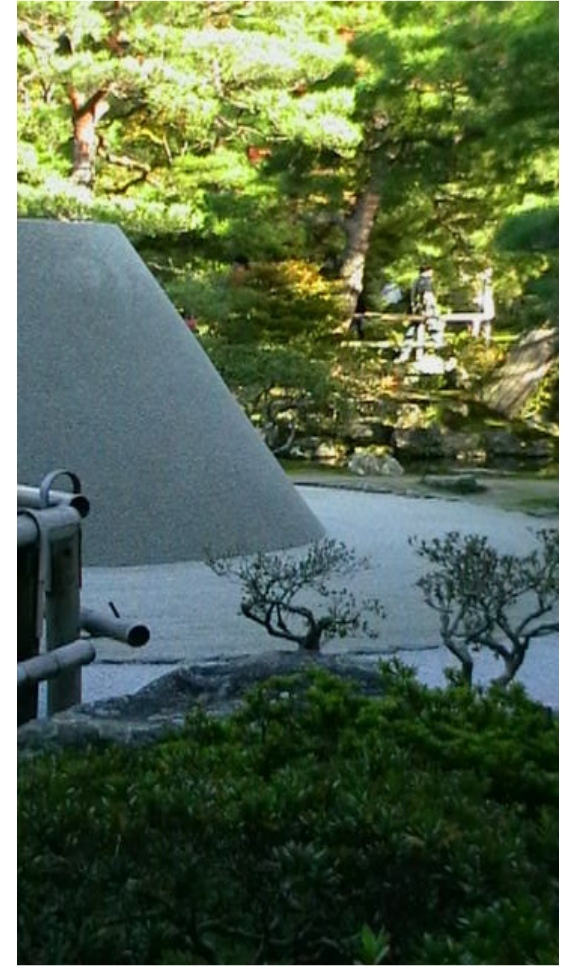
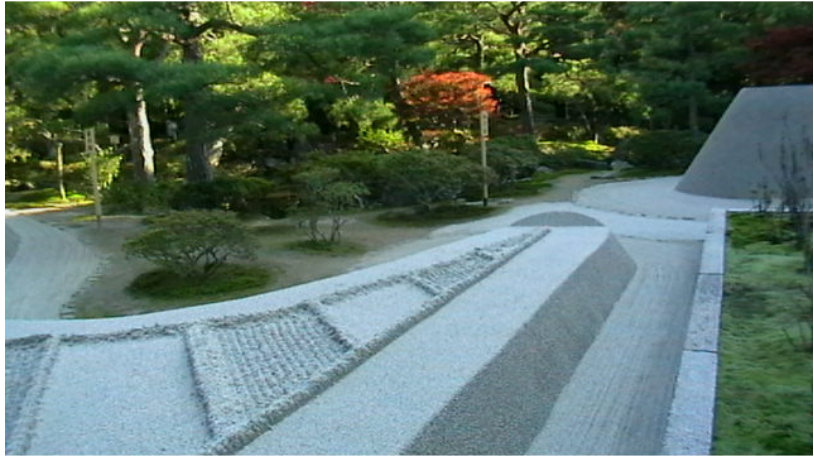














Gion
13/11/2008



To-ji
14/11/2008





Higashi Hongang-ji
15/11/2008



Nishi Hongang-ji
15/11/2008

